

Product datasheet for **AP22784PU-N**

CDC25A (271-300) Rabbit Polyclonal Antibody

Product data:

Product Type:	Primary Antibodies
Applications:	IHC, WB
Recommended Dilution:	Immunohistochemistry on Paraffin Sections: 10 µg/ml. Western Blot: 1/1000.
Reactivity:	Human
Host:	Rabbit
Clonality:	Polyclonal
Immunogen:	This Cdc25A antibody is generated from rabbits immunized with a KLH conjugated synthetic peptide between 271-300 amino acids from the Central region of human Cdc25A.
Specificity:	This antibody reacts to Protein Tyrosine Phosphatase CDC25A (CDC25A).
Formulation:	PBS containing 0.09% sodium azide State: Purified State: Liquid purified Ig fraction
Purification:	Immunoaffinity Chromatography
Conjugation:	Unconjugated
Storage:	Store the antibody undiluted at 2-8°C for one month or (in aliquots) at -20°C for longer. Avoid repeated freezing and thawing.
Stability:	Shelf life: one year from despatch.
Gene Name:	cell division cycle 25A
Database Link:	Entrez Gene 993 Human P30304



[View online »](#)

Background:

CDC25A, a CDC25 dual specificity protein phosphatase, has been shown to activate the cyclin-dependent kinases at different points of the cell cycle. CDC25A has been shown to affect S phase entry and possibly the initiation of mitosis. CDC25A dephosphorylates cyclin dependent kinases, including Cdk2, Cdk4, as well as non cyclin proteins such as the homeodomain transcription factor cut, the proto-oncogene Raf-1. CDC25A has been implicated in many carcinomas, including those of the colon, lymph node, stomach, ovary, breast. CDC25A is located on chromosome 3p21 in an area frequently involved in karyotypic abnormalities in renal carcinomas, small cell carcinomas of the lung, and benign tumors of the salivary gland.

Synonyms:

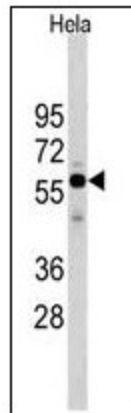
CDC-25A

Protein Families:

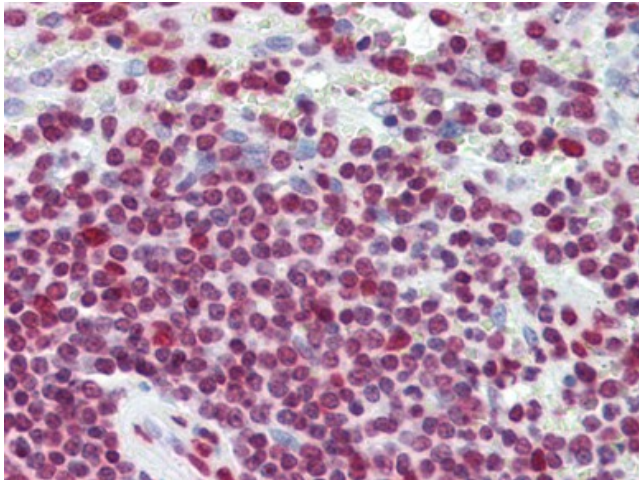
Druggable Genome, Phosphatase

Protein Pathways:

Cell cycle, Progesterone-mediated oocyte maturation

Product images:

Western blot analysis of HeLa cell line lysates (35 ug/lane).



Human Spleen (formalin-fixed, paraffin-embedded) stained with CDC25A antibody AP22784PU-N followed by biotinylated goat anti-rabbit IgG secondary antibody, alkaline phosphatase-streptavidin and chromogen.