

## Product datasheet for **AP22781PU-N**

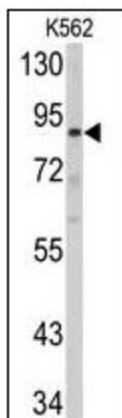
### ABCB5 (N-term) Rabbit Polyclonal Antibody

#### Product data:

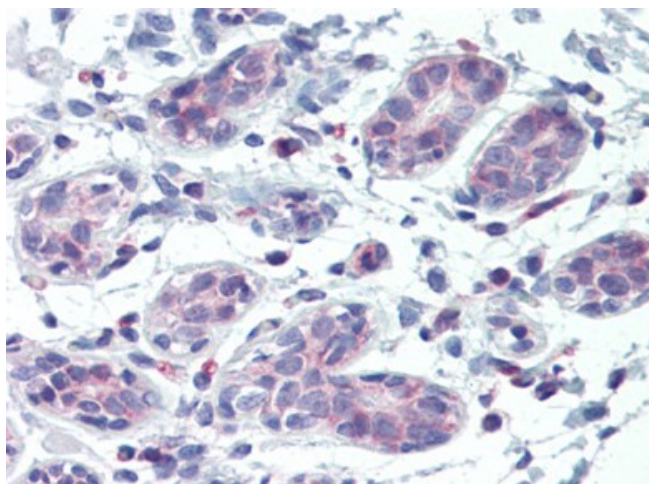
|                       |  |
|-----------------------|--|
| Product Type:         | Primary Antibodies   |
| Applications:         | FC, IHC, WB  |
| Recommended Dilution: | <b>Flow Cytometry:</b> 1/10 - 1/50.<br><b>Immunohistochemistry on Paraffin Sections:</b> 10 µg/ml.<br><b>Western Blot:</b> 1/1000. |
| Reactivity:           | Human  |
| Host:                 | Rabbit   |
| Clonality:            | Polyclonal   |
| Immunogen:            | ABCB5 antibody was raised against kLH conjugated synthetic peptide selected from the N-terminal region of human ABCB5.             |
| Specificity:          | This antibody reacts to ATP-Binding Cassette, Sub-family B (MDR/TAP), Member 5 (Abcb5).  |
| Formulation:          | PBS containing 0.09% sodium azide<br>State: Ig Fraction<br>State: Liquid purified Ig fraction                                      |
| Purification:         | Ammonium Sulfate Precipitation   |
| Conjugation:          | Unconjugated   |
| Storage:              | Store the antibody undiluted at 2-8°C for one month or (in aliquots) at -20°C for longer.<br>Avoid repeated freezing and thawing.  |
| Stability:            | Shelf life: one year from despatch.  |
| Gene Name:            | ATP binding cassette subfamily B member 5  |
| Database Link:        | <a href="#">Entrez Gene 340273 Human Q2M3G0</a>  |
| Synonyms:             | ABCB5alpha; ABCB5beta; EST422562   |
| Protein Families:     | Druggable Genome, Transmembrane  |
| Protein Pathways:     | ABC transporters   |



[View online »](#)

**Product images:**

Western blot analysis of K562 cell line lysates (35 ug/lane).



Human Breast (formalin-fixed, paraffin-embedded) stained with ABCB5 antibody followed by biotinylated goat anti-rabbit IgG secondary antibody, alkaline phosphatase-streptavidin and chromogen.