

Product datasheet for **AP22780PU-N**

Aldolase C (ALDOC) (C-term) Rabbit Polyclonal Antibody

Product data:

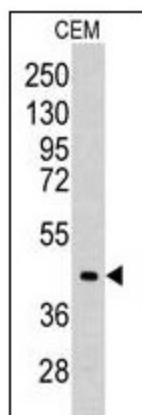
Product Type:	Primary Antibodies
Applications:	IHC, WB
Recommended Dilution:	Immunohistochemistry on Paraffin Sections: 10 µg/ml. Western Blot: 1/1000.
Reactivity:	Human, Mouse
Host:	Rabbit
Clonality:	Polyclonal
Immunogen:	ALDOC antibody was raised against kLH conjugated synthetic peptide selected from the C-terminal region of Human ALDOC. Epitope: C-Terminus
Specificity:	This antibody detects Aldolase C/ALDOC (C-term).
Formulation:	PBS containing 0.09% Sodium Azide as preservative State: Ig Fraction State: Liquid purified Ig fraction
Purification:	Ammonium Sulfate Precipitation
Conjugation:	Unconjugated
Storage:	Store the antibody undiluted at 2-8°C for one month or (in aliquots) at -20°C for longer. Avoid repeated freezing and thawing.
Stability:	Shelf life: one year from despatch.
Gene Name:	aldolase, fructose-bisphosphate C
Database Link:	Entrez Gene 11676 Mouse Entrez Gene 230 Human P09972
Background:	ALDOC is a member of the fructose-biphosphate aldolase protein family. Expressed specifically in the hippocampus and Purkinje cells of the brain, this protein is a glycolytic enzyme that catalyzes the reversible aldol cleavage of fructose-1,6-biphosphate and fructose 1-phosphate to dihydroxyacetone phosphate and either glyceraldehyde-3-phosphate or glyceraldehyde, respectively.
Synonyms:	ALDC, Brain-type aldolase



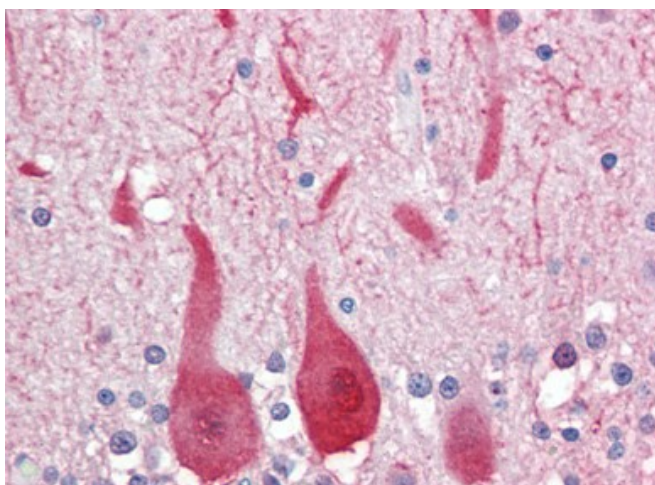
[View online »](#)

Protein Pathways: Fructose and mannose metabolism, Glycolysis / Gluconeogenesis, Metabolic pathways, Pentose phosphate pathway

Product images:



Western blot analysis of CEM cell line lysates (35 ug/lane).



Human Brain, Cerebellum (formalin-fixed, paraffin-embedded) stained with ALDOC antibody AP22780PU-N followed by biotinylated goat anti-rabbit IgG secondary antibody, alkaline phosphatase-streptavidin and chromogen.