

Product datasheet for **AP22777PU-N**

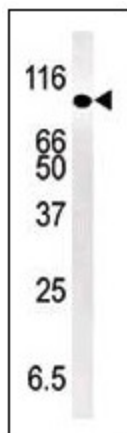
SMURF1 (66-96) Rabbit Polyclonal Antibody

Product data:

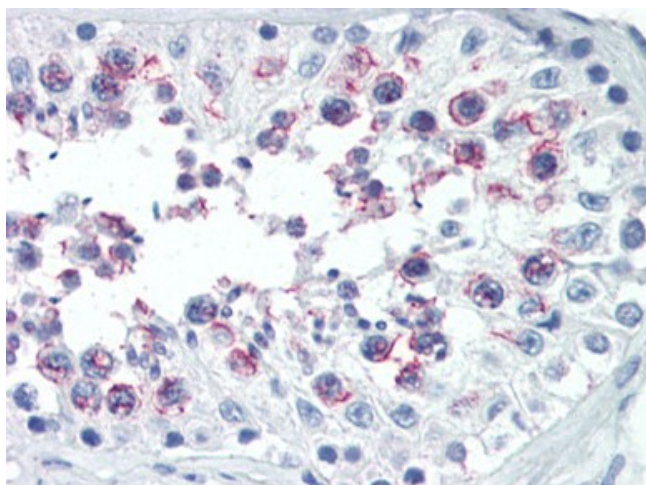
Product Type:	Primary Antibodies
Applications:	IHC, WB
Recommended Dilution:	Immunohistochemistry on Paraffin Sections: 10 µg/ml. Western Blot: 1/1000.
Reactivity:	Human, Mouse
Host:	Rabbit
Clonality:	Polyclonal
Immunogen:	SMURF1 antibody was raised against kLH conjugated synthetic peptide selected from the N-terminal region of human SMURF1 (aa 66-96).
Specificity:	This antibody reacts to Smad Ubiquitination Regulatory Factor 1 (SMURF1).
Formulation:	PBS containing 0.09% sodium azide State: Purified State: Liquid purified Ig fraction
Purification:	Ammonium sulfate precipitation
Conjugation:	Unconjugated
Storage:	Store the antibody undiluted at 2-8°C for one month or (in aliquots) at -20°C for longer. Avoid repeated freezing and thawing.
Stability:	Shelf life: one year from despatch.
Gene Name:	SMAD specific E3 ubiquitin protein ligase 1
Database Link:	Entrez Gene 75788 Mouse Entrez Gene 57154 Human Q9HCE7
Background:	E3 ubiquitin-protein ligase that acts as a negative regulator of BMP signaling pathway. Mediates ubiquitination and degradation of SMAD1 and SMAD5, 2 receptor-regulated SMADs specific for the BMP pathway. Promotes ubiquitination and subsequent proteasomal degradation of TRAF family members and RHOA.
Synonyms:	SMURF 1, SMURF-1, KIAA1625
Protein Families:	Druggable Genome
Protein Pathways:	Endocytosis, TGF-beta signaling pathway, Ubiquitin mediated proteolysis



[View online »](#)

Product images:

Western blot analysis in mouse kidney tissue lysate (35 ug/lane).



Human Testis (formalin-fixed, paraffin-embedded) stained with SMURF1 antibody AP22777PU-N followed by biotinylated goat anti-rabbit IgG secondary antibody, alkaline phosphatase-streptavidin and chromogen.