

Product datasheet for **AP22769PU-N**

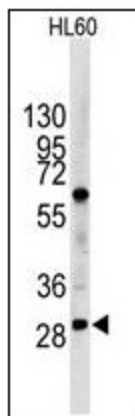
LIN28B (N-term, 1-30) Rabbit Polyclonal Antibody

Product data:

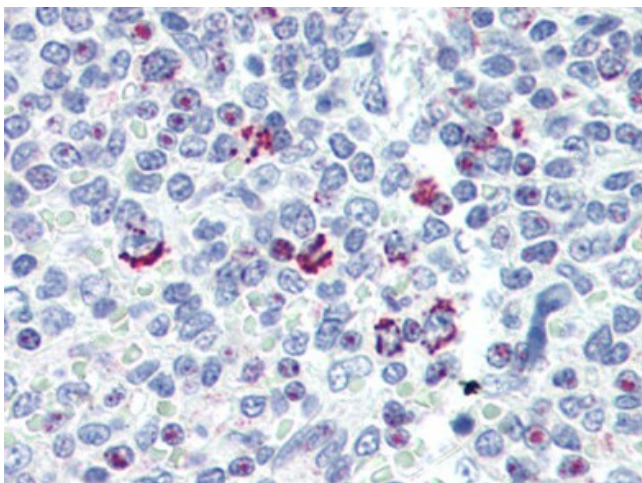
Product Type:	Primary Antibodies
Applications:	FC, IF, IHC, WB
Recommended Dilution:	Flow Cytometry: 1/10 - 1/50. Immunofluorescence: 1/100. Immunohistochemistry on Paraffin Sections: 10 µg/ml. Western Blot: 1/1000.
Reactivity:	Human
Host:	Rabbit
Clonality:	Polyclonal
Immunogen:	This LIN28B antibody is generated from rabbits immunized with a KLH conjugated synthetic peptide between 1-30 amino acids from the N-terminal region of human LIN28B.
Specificity:	This antibody reacts to Lin-28 Homolog B (LIN28B).
Formulation:	PBS containing 0.09% sodium azide State: Purified State: Liquid purified Ig fraction
Purification:	Protein A Chromatography
Conjugation:	Unconjugated
Storage:	Store the antibody undiluted at 2-8°C for one month or (in aliquots) at -20°C for longer. Avoid repeated freezing and thawing.
Stability:	Shelf life: one year from despatch.
Gene Name:	lin-28 homolog B
Database Link:	Entrez Gene 389421 Human Q6ZN17
Synonyms:	LIN28B, CSDD2, Lin-28 homolog B



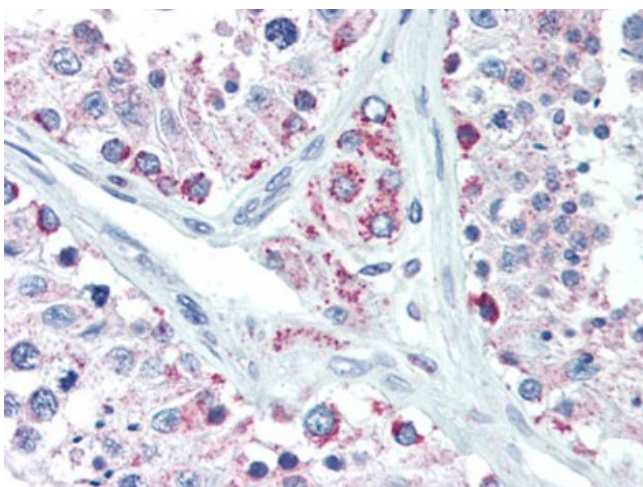
[View online »](#)

Product images:


Western blot analysis of LIN28B in HL60 cell line lysates (35 ug/lane).



Human Spleen (formalin-fixed, paraffin-embedded) stained with LIN28B antibody followed by biotinylated goat anti-rabbit IgG secondary antibody, alkaline phosphatase-streptavidin and chromogen.



Human Testis (formalin-fixed, paraffin-embedded) stained with LIN28B antibody followed by biotinylated goat anti-rabbit IgG secondary antibody, alkaline phosphatase-streptavidin and chromogen.