

Product datasheet for **AP22768PU-N**

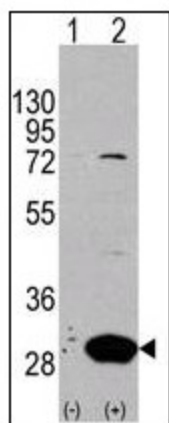
LXN (78-107) Rabbit Polyclonal Antibody

Product data:

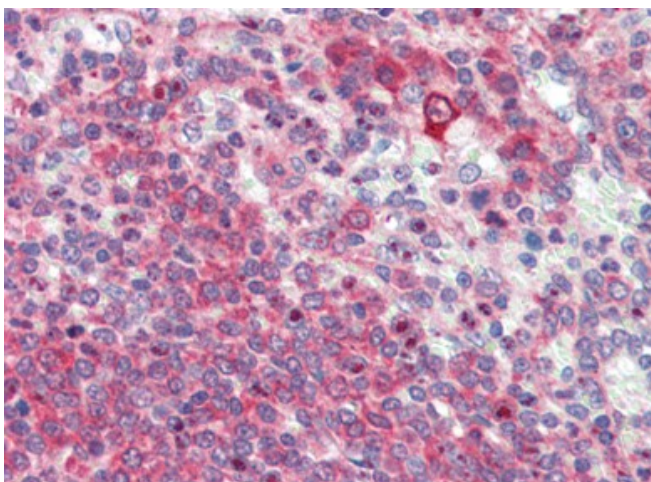
Product Type:	Primary Antibodies
Applications:	FC, IHC, WB
Recommended Dilution:	Flow Cytometry: 1/10 - 1/50. Immunohistochemistry on Paraffin Sections: 10 µg/ml. Western Blot: 1/1000.
Reactivity:	Human
Host:	Rabbit
Clonality:	Polyclonal
Immunogen:	This Latexin antibody is generated from rabbits immunized with a KLH conjugated synthetic peptide between 78-107 amino acids from the Central region of human Latexin.
Specificity:	This antibody reacts to Latexin Protein (LXN).
Formulation:	PBS containing 0.09% sodium azide State: Purified State: Liquid purified Ig fraction
Purification:	Protein A Chromatography
Conjugation:	Unconjugated
Storage:	Store the antibody undiluted at 2-8°C for one month or (in aliquots) at -20°C for longer. Avoid repeated freezing and thawing.
Stability:	Shelf life: one year from despatch.
Gene Name:	latexin
Database Link:	Entrez Gene 56925 Human Q9BS40
Synonyms:	LXN, Latexin, Endogenous carboxypeptidase inhibitor, ECI, Tissue carboxypeptidase inhibitor, TCI, MUM



[View online »](#)

Product images:

Western blot analysis of Latexin (arrow) in 293 cell lysates (2 ug/lane) either nontransfected (Lane 1) or transiently transfected with the LXN gene (Lane 2)



Human Spleen (formalin-fixed, paraffin-embedded) stained with LXN antibody AP22768PU-N followed by biotinylated goat anti-rabbit IgG secondary antibody, alkaline phosphatase-streptavidin and chromogen.