

Product datasheet for **AP22760PU-N**

NOTCH2 (2457-2471) Rabbit Polyclonal Antibody

Product data:

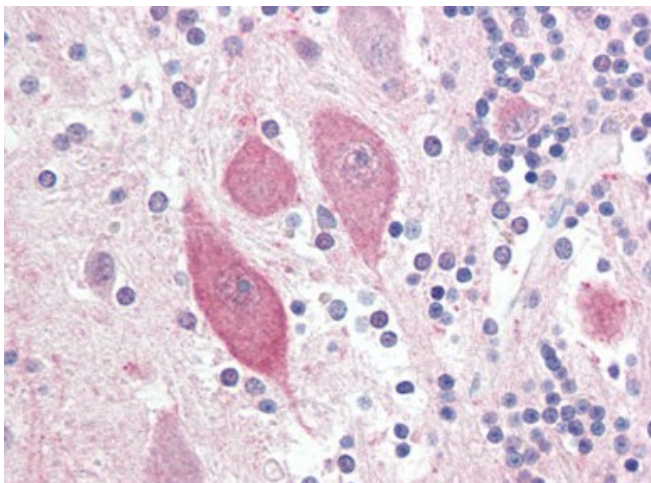
Product Type:	Primary Antibodies
Applications:	ELISA, IHC
Recommended Dilution:	ELISA: 1/1000. Immunohistochemistry on Paraffin Sections: 5 µg/ml.
Reactivity:	Human, Monkey
Host:	Rabbit
Clonality:	Polyclonal
Immunogen:	Synthetic peptide from human NOTCH2 (aa 2457-2471)
Specificity:	This antibody reacts to Notch Homolog 2 (NOTCH2) at aa 2457-2471.
Formulation:	PBS containing 0.09% sodium azide State: Purified State: Liquid purified Ig fraction
Concentration:	lot specific
Purification:	Protein G Chromatography
Conjugation:	Unconjugated
Storage:	Store the antibody undiluted at 2-8°C for one month or (in aliquots) at -20°C for longer. Avoid repeated freezing and thawing.
Stability:	Shelf life: one year from despatch.
Gene Name:	notch 2
Database Link:	Entrez Gene 4853 Human Q04721
Background:	NOTCH2 is a member of the Notch family. Members of this Type 1 transmembrane protein family share structural characteristics including an extracellular domain consisting of multiple epidermal growth factor-like (EGF) repeats, and an intracellular domain consisting of multiple, different domain types. Notch family members play a role in a variety of developmental processes by controlling cell fate decisions.
Synonyms:	Notch 2, hN2
Protein Families:	Druggable Genome, Transmembrane



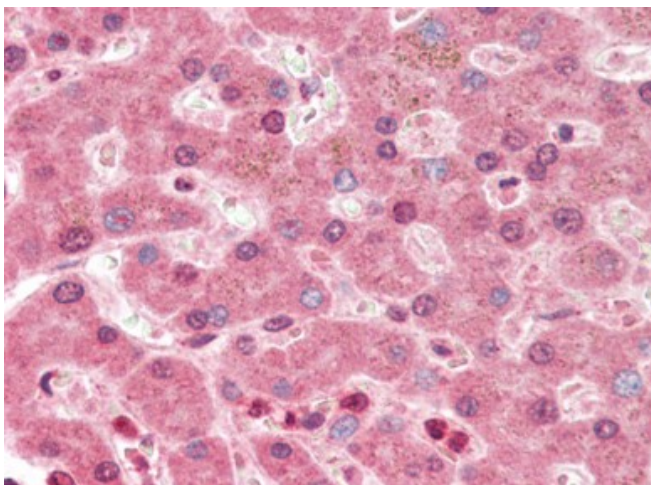
[View online »](#)

Protein Pathways: Dorsal-ventral axis formation, Notch signaling pathway

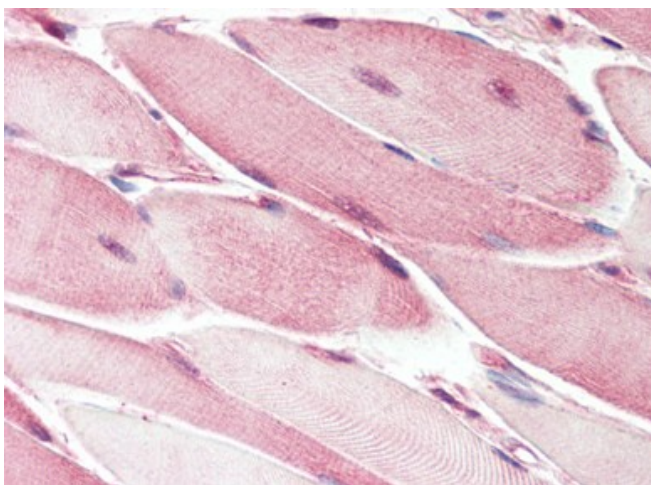
Product images:



Human Brain, Cerebellum (formalin-fixed, paraffin-embedded) stained with NOTCH2 antibody followed by biotinylated goat anti-rabbit IgG secondary antibody, alkaline phosphatase-streptavidin and chromogen.



Human Liver (formalin-fixed, paraffin-embedded) stained with NOTCH2 antibody followed by biotinylated goat anti-rabbit IgG secondary antibody, alkaline phosphatase-streptavidin and chromogen.



Human Skeletal Muscle (formalin-fixed, paraffin-embedded) stained with NOTCH2 antibody followed by biotinylated goat anti-rabbit IgG secondary antibody, alkaline phosphatase-streptavidin and chromogen.