

Product datasheet for **AP22756PU-N**

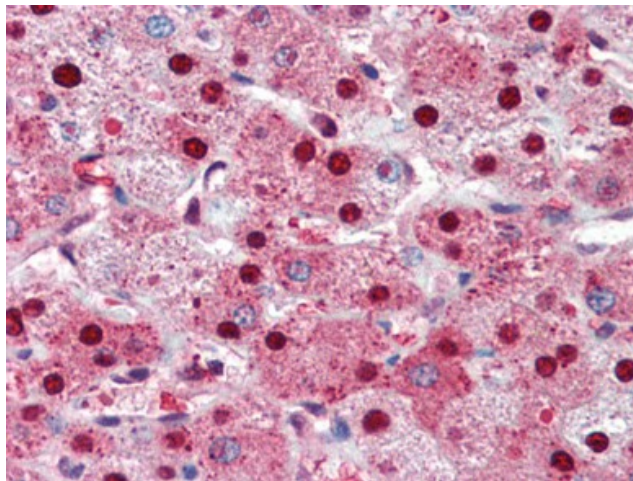
PARP1 (N-term) Rabbit Polyclonal Antibody

Product data:

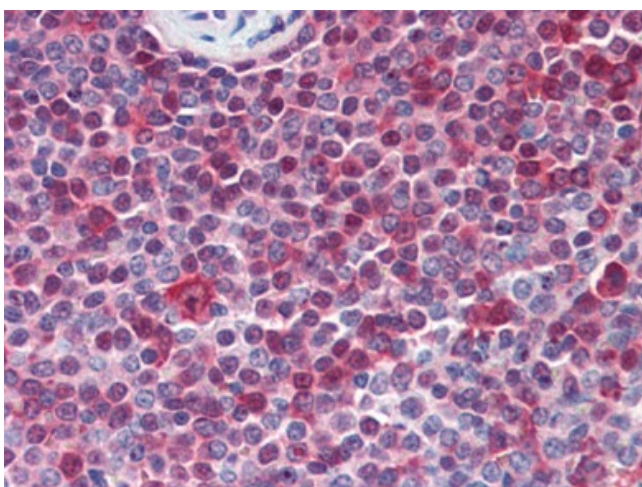
Product Type:	Primary Antibodies
Applications:	IHC, WB
Recommended Dilution:	Immunohistochemistry on Paraffin Sections: 15 µg/ml. Western Blot.
Reactivity:	Human, Mouse, Rat
Host:	Rabbit
Clonality:	Polyclonal
Immunogen:	PARP1 antibody was raised against a synthetic peptide derived from N-terminus of human PARP protein
Specificity:	This antibody reacts to Poly (ADP-ribose) Polymerase Family, Member 1 (PARP1).
Formulation:	10 mM PBS, pH 7.4, BSA, sodium azide. State: Purified State: Liquid purified Ig fraction
Concentration:	lot specific
Purification:	Immunoaffinity Chromatography
Conjugation:	Unconjugated
Storage:	Store the antibody undiluted at 2-8°C for one month or (in aliquots) at -20°C for longer. Avoid repeated freezing and thawing.
Stability:	Shelf life: one year from despatch.
Gene Name:	poly(ADP-ribose) polymerase 1
Database Link:	Entrez Gene 11545 Mouse Entrez Gene 25591 Rat Entrez Gene 142 Human P09874
Synonyms:	PARP-1, ADPRT, ADPRT 1, PPOL
Protein Families:	Druggable Genome, Stem cell - Pluripotency, Transcription Factors
Protein Pathways:	Base excision repair



[View online »](#)

Product images:

Human Liver (formalin-fixed, paraffin-embedded) stained with PARP1 antibody AP22756PU-N followed by biotinylated goat anti-rabbit IgG secondary antibody, alkaline phosphatase-streptavidin and chromogen.



Human Spleen (formalin-fixed, paraffin-embedded) stained with PARP1 antibody AP22756PU-N followed by biotinylated goat anti-rabbit IgG secondary antibody, alkaline phosphatase-streptavidin and chromogen.