

## Product datasheet for **AP22755PU-N**

### Caspase 1 (CASP1) Rabbit Polyclonal Antibody

#### Product data:

Product Type:	Primary Antibodies
Applications:	IHC
Recommended Dilution:	<b>Immunohistochemistry on Paraffin Sections:</b> 1/50.
Reactivity:	Human, Mouse, Rat
Host:	Rabbit
Clonality:	Polyclonal
Immunogen:	CASP1 antibody was raised against a synthetic peptide from the second quarter of human Caspase 1 protein
Specificity:	This antibody reacts to Caspase 1 (CASP1).
Formulation:	10 mM PBS, pH 7.4 with 1% BSA and 0.09% Sodium Azide
	State: Purified
	State: Liquid purified Ig fraction
Purification:	Immunoaffinity Chromatography
Conjugation:	Unconjugated
Storage:	Store the antibody undiluted at 2-8°C for one month or (in aliquots) at -20°C for longer. Avoid repeated freezing and thawing.
Stability:	Shelf life: one year from despatch.
Gene Name:	caspase 1
Database Link:	<u><a href="#">Entrez Gene 12362 Mouse</a></u> <u><a href="#">Entrez Gene 25166 Rat</a></u> <u><a href="#">Entrez Gene 834 Human P29466</a></u>
Background:	Caspase 1, also called interleukin-1 beta converting enzyme, is a cysteine C14 endopeptidase able to process pro-interleukin-1 beta into its active form. Caspase 1 is identical to <i>Caenorhabditis elegans</i> cell death gene <i>ced-3</i> and may be involved in apoptotic signalling. Inhibition of caspase-1 in mice models extended survival and delayed appearance of neuronal inclusions and symptoms of Huntingdon disease.
Synonyms:	CASP-1, CASP1, IL1BC, IL1BCE, ICE, p45

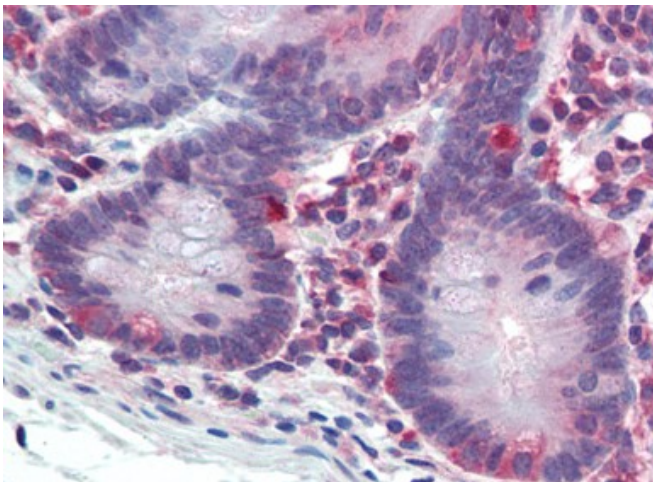


[View online »](#)

**Protein Families:** Druggable Genome, Protease

**Protein Pathways:** Amyotrophic lateral sclerosis (ALS), Cytosolic DNA-sensing pathway, NOD-like receptor signaling pathway

**Product images:**



Human Small Intestine (formalin-fixed, paraffin-embedded) stained with CASP1 antibody AP22755PU-N followed by biotinylated goat anti-rabbit IgG secondary antibody, alkaline phosphatase-streptavidin and chromogen.