

Product datasheet for **AP22751PU-N**

ALDH2 (N-term) Rabbit Polyclonal Antibody

Product data:

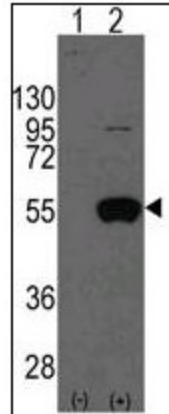
Product Type:	Primary Antibodies
Applications:	FC, IF, IHC, WB
Recommended Dilution:	Flow Cytometry. Immunofluorescence: 1/10 - 1/50. Immunohistochemistry on Paraffin Sections: 10 µg/ml. Western Blot: 1/1000.
Reactivity:	Human
Host:	Rabbit
Clonality:	Polyclonal
Immunogen:	This ALDH2 antibody is generated from rabbits immunized with a KLH conjugated synthetic peptide between 52-81 amino acids from the N-terminal region of human ALDH2.
Specificity:	This antibody reacts to Aldehyde Dehydrogenase, Mitochondrial (ALDH2).
Formulation:	PBS containing 0.09% sodium azide State: Purified State: Liquid purified Ig fraction
Concentration:	lot specific
Purification:	Protein A Chromatography
Conjugation:	Unconjugated
Storage:	Store the antibody undiluted at 2-8°C for one month or (in aliquots) at -20°C for longer. Avoid repeated freezing and thawing.
Stability:	Shelf life: one year from despatch.
Gene Name:	aldehyde dehydrogenase 2 family (mitochondrial)
Database Link:	Entrez Gene 217 Human P05091
Synonyms:	Aldehyde dehydrogenase mitochondrial, ALDH class 2, ALDHI, ALDH-E2, ALDM
Protein Families:	Druggable Genome



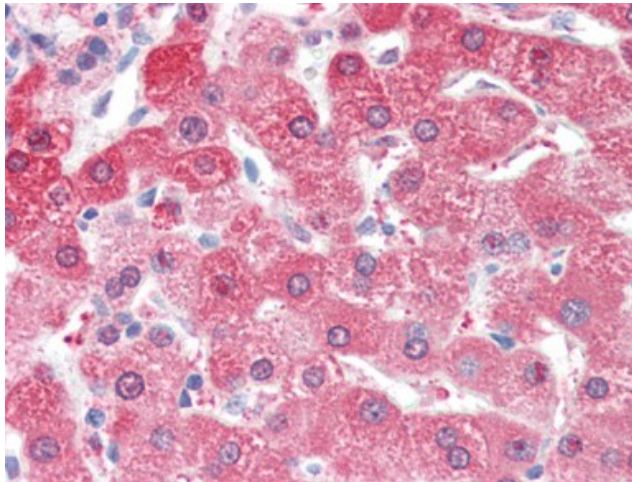
[View online »](#)

Protein Pathways:

Arginine and proline metabolism, Ascorbate and aldarate metabolism, beta-Alanine metabolism, Butanoate metabolism, Fatty acid metabolism, Glycerolipid metabolism, Glycolysis / Gluconeogenesis, Histidine metabolism, Limonene and pinene degradation, Lysine degradation, Metabolic pathways, Propanoate metabolism, Pyruvate metabolism, Tryptophan metabolism, Valine, leucine and isoleucine degradation

Product images:

Western blot analysis of ALDH2 (arrow) in 293 cell lysates (2 ug/lane) either nontransfected (Lane 1) or transiently transfected with the ALDH2 gene (Lane 2)



Human Liver (formalin-fixed, paraffin-embedded) stained with ALDH2 antibody followed by biotinylated goat anti-rabbit IgG secondary antibody, alkaline phosphatase-streptavidin and chromogen.