

## Product datasheet for **AP22743PU-N**

### Growth Hormone (GH1) Rabbit Polyclonal Antibody

#### Product data:

Product Type:	Primary Antibodies
Applications:	IHC
Recommended Dilution:	<b>Immunohistochemistry on Paraffin Sections:</b> 1/100 - 1/200.
Reactivity:	Human
Host:	Rabbit
Clonality:	Polyclonal
Immunogen:	GH1 antibody was raised against purified human growth hormone
Specificity:	This antibody reacts to Growth Hormone (GH1).
Formulation:	10mM PBS/1% BSA buffer pH 7.4 with 0.09% sodium azide. State: Purified State: Liquid purified Ig fraction
Purification:	Immunoaffinity Chromatography
Conjugation:	Unconjugated
Storage:	Store the antibody undiluted at 2-8°C. DO NOT FREEZE!
Stability:	Shelf life: one year from despatch.
Gene Name:	growth hormone 1
Database Link:	<a href="#">Entrez Gene 2688 Human P01241</a>
Background:	The protein encoded by this gene is a member of the somatotropin/prolactin family of hormones which play an important role in growth control. The gene, along with four other related genes, is located at the growth hormone locus on chromosome 17 where they are interspersed in the same transcriptional orientation; an arrangement which is thought to have evolved by a series of gene duplications. The five genes share a remarkably high degree of sequence identity. Alternative splicing generates additional isoforms of each of the five growth hormones, leading to further diversity and potential for specialization. Mutations in or deletions of the gene lead to growth hormone deficiency and short stature.
Synonyms:	Pituitary growth hormone, Growth hormone 1, HGH

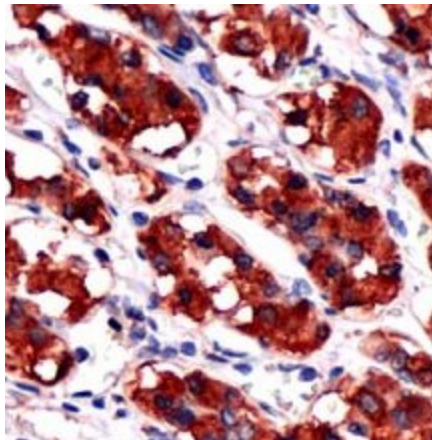


[View online »](#)

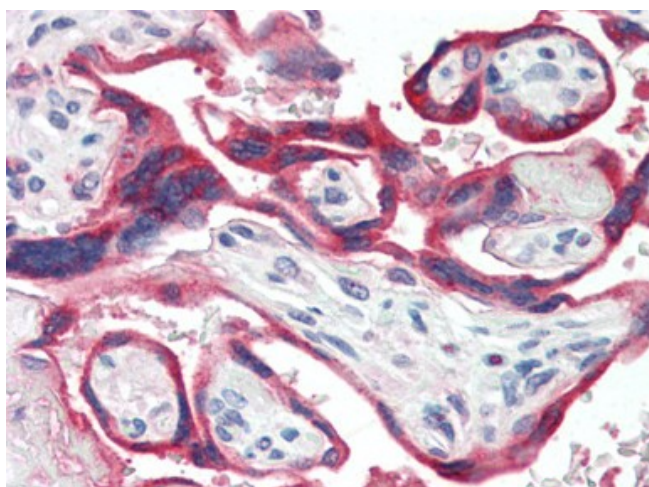
**Protein Families:** Druggable Genome, Secreted Protein

**Protein Pathways:** Cytokine-cytokine receptor interaction, Jak-STAT signaling pathway, Neuroactive ligand-receptor interaction

**Product images:**



Human anterior pituitary stained with anti-GH1 (AP22743PU-N)



Human Placenta (formalin-fixed, paraffin-embedded) stained with GH1 antibody AP22743PU-N at 10 µg/ml followed by biotinylated goat anti-rabbit IgG secondary antibody, alkaline phosphatase-streptavidin and chromogen.