

Product datasheet for **AP22728PU-N**

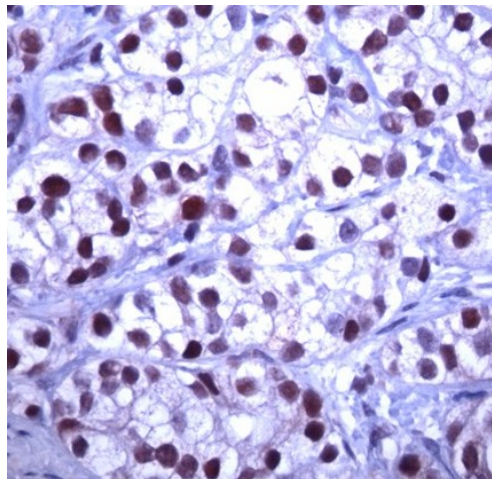
SKP2 (221-425) Rabbit Polyclonal Antibody

Product data:

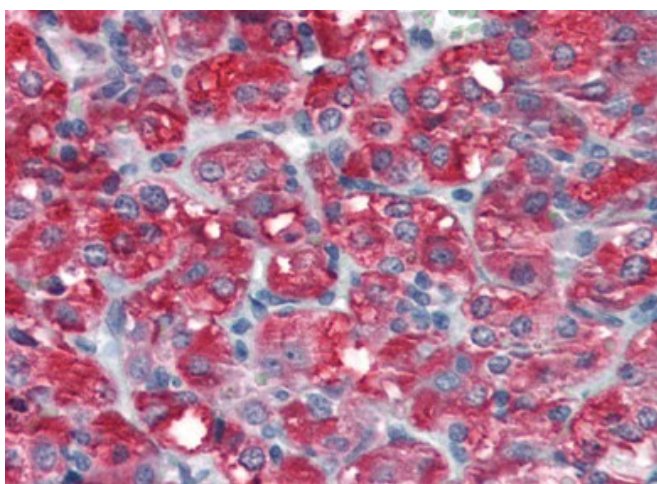
Product Type:	Primary Antibodies
Applications:	IHC
Recommended Dilution:	Immunohistochemistry on Paraffin Sections: 10 µg/ml.
Reactivity:	Human
Host:	Rabbit
Clonality:	Polyclonal
Immunogen:	SKP2 antibody was raised against recombinant protein encoding aa 221-425 of human Skp2 alpha.
Specificity:	This antibody reacts to S-phase Kinase-associated Protein 2 (p45) (SKP2) at aa 221-425.
Formulation:	10 mM PBS, pH 7.4, BSA, sodium azide State: Aff - Purified State: Liquid purified Ig fraction
Concentration:	lot specific
Purification:	Immunoaffinity Chromatography
Conjugation:	Unconjugated
Storage:	Store the antibody undiluted at 2-8°C. DO NOT FREEZE!
Stability:	Shelf life: one year from despatch.
Gene Name:	S-phase kinase-associated protein 2, E3 ubiquitin protein ligase
Database Link:	Entrez Gene 6502 Human Q13309
Synonyms:	FBL1; FBXL1; FLB1; MGC1366; p45skp2
Protein Families:	Druggable Genome
Protein Pathways:	Acute myeloid leukemia, Apoptosis, Cell cycle, Oocyte meiosis, p53 signaling pathway, Pathways in cancer, Progesterone-mediated oocyte maturation, Small cell lung cancer, Ubiquitin mediated proteolysis



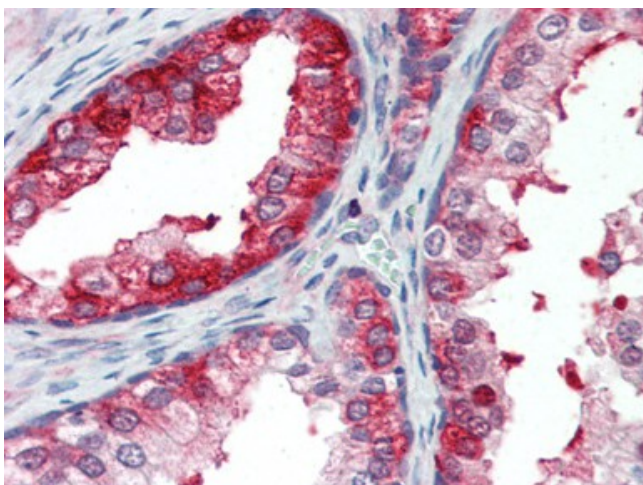
[View online »](#)

Product images:

Human prostate stained with anti-SKP2



Human Adrenal (formalin-fixed, paraffin-embedded) stained with SKP2 antibody at 10 ug/ml followed by biotinylated goat anti-rabbit IgG secondary antibody, alkaline phosphatase-streptavidin and chromogen.



Human Prostate (formalin-fixed, paraffin-embedded) stained with SKP2 antibody at 10 ug/ml followed by biotinylated goat anti-rabbit IgG secondary antibody, alkaline phosphatase-streptavidin and chromogen.