

## Product datasheet for **AP22713PU-N**

### **MET (C-term) Rabbit Polyclonal Antibody**

#### **Product data:**

Product Type:	Primary Antibodies
Applications:	IHC
Recommended Dilution:	<b>Immunohistochemistry on Paraffin Sections:</b> 15 µg/ml.
Reactivity:	Human
Host:	Rabbit
Clonality:	Polyclonal
Immunogen:	MET antibody was raised against a synthetic peptide from C-terminus of human c-Met protein
Specificity:	This antibody reacts to Hepatocyte Growth Factor Receptor (MET).
Formulation:	10mM PBS/1% BSA buffer pH 7.4 with 0.09% sodium azide. State: Purified State: Liquid purified Ig fraction
Concentration:	lot specific
Purification:	Immunoaffinity Chromatography
Conjugation:	Unconjugated
Storage:	Store the antibody undiluted at 2-8°C. DO NOT FREEZE!
Stability:	Shelf life: one year from despatch.
Gene Name:	MET proto-oncogene, receptor tyrosine kinase
Database Link:	<a href="#">Entrez Gene 4233 Human P08581</a>
Background:	Met, an HGF Receptor/Met type protein kinase, is a cell-surface proto-oncogene that mediates the biological activities of hepatocyte growth factor. The protein is a disulfide-linked heterodimer comprised of two subunits: a 50 kD extracellular alpha subunit and a membrane-spanning 145 kD beta subunit that binds ligand. Met is an important regulator of cell proliferation and differentiation, organ regeneration, embryogenesis, and tumorigenesis. Constitutive activation mutations of the met gene lead to many cancers, particularly renal papillary carcinoma.



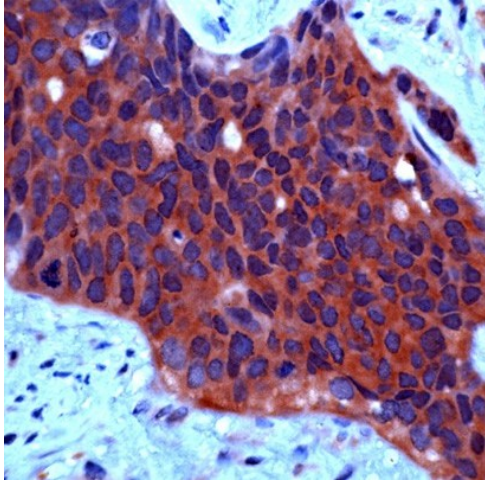
[View online »](#)

**Synonyms:** Hepatocyte growth factor receptor, MET, Scatter factor receptor, HGF/SF receptor, c-Met

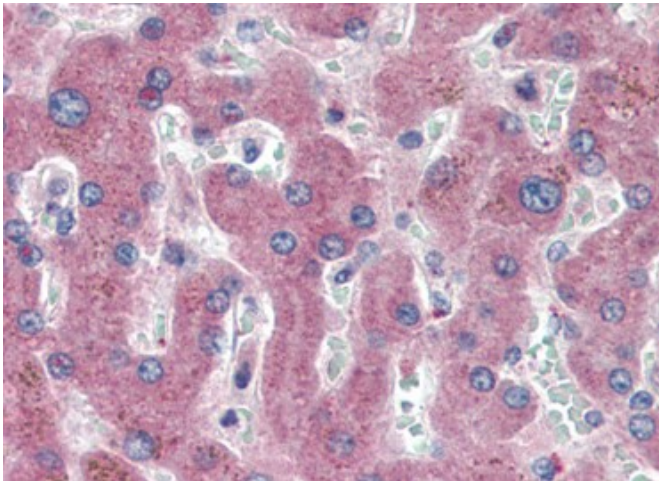
**Protein Families:** Druggable Genome, Protein Kinase, Transmembrane

**Protein Pathways:** Adherens junction, Axon guidance, Colorectal cancer, Cytokine-cytokine receptor interaction, Endocytosis, Epithelial cell signaling in Helicobacter pylori infection, Focal adhesion, Melanoma, Pathways in cancer, Renal cell carcinoma

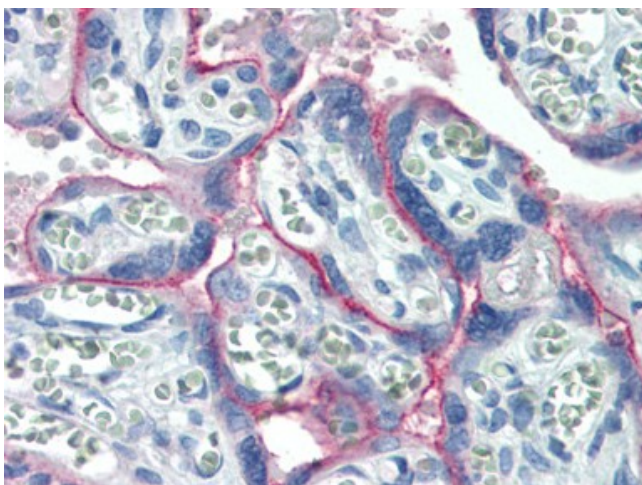
**Product images:**



Human ovarian ca. stained with anti-c-Met



Human Liver (formalin-fixed, paraffin-embedded) stained with c-Met antibody at 15 ug/ml followed by biotinylated goat anti-rabbit IgG secondary antibody, alkaline phosphatase-streptavidin and chromogen.



Human Placenta (formalin-fixed, paraffin-embedded) stained with c-Met antibody at 15 ug/ml followed by biotinylated goat anti-rabbit IgG secondary antibody, alkaline phosphatase-streptavidin and chromogen.