

Product datasheet for **AP22710PU-N**

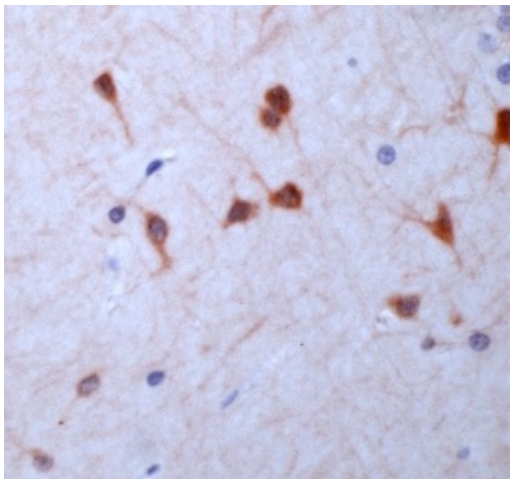
GUCY1B1 (189-207) Rabbit Polyclonal Antibody

Product data:

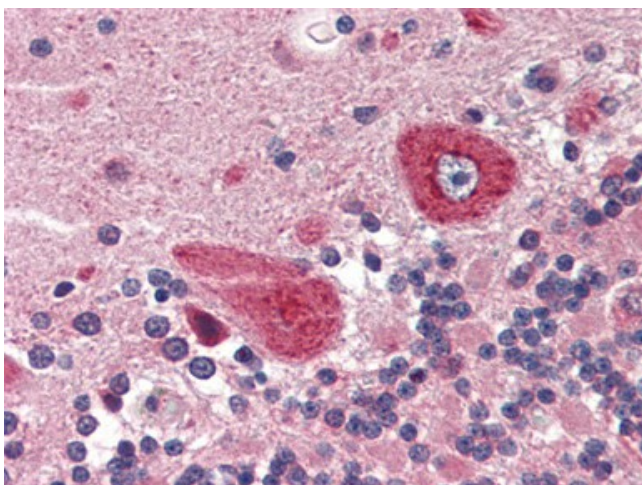
Product Type:	Primary Antibodies
Applications:	IHC
Recommended Dilution:	Immunohistochemistry on Paraffin Sections: 10 µg/ml.
Reactivity:	Human, Mouse, Rat
Host:	Rabbit
Clonality:	Polyclonal
Immunogen:	GUCY1B3 antibody was raised against a synthetic peptide from aa 189-207 of human guanylyl cyclase beta 1, soluble.
Specificity:	This antibody reacts to Guanylate Cyclase 1, Soluble, Beta 3 (GUCY1B3) at aa 189-207.
Formulation:	10 mM PBS, pH 7.4, BSA, 0.09% sodium azide State: Aff - Purified State: Liquid purified Ig fraction
Purification:	Immunoaffinity Chromatography
Conjugation:	Unconjugated
Storage:	Store the antibody undiluted at 2-8°C. DO NOT FREEZE!
Stability:	Shelf life: one year from despatch.
Gene Name:	guanylate cyclase 1, soluble, beta 3
Database Link:	Entrez Gene 25202 Rat Entrez Gene 54195 Mouse Entrez Gene 2983 Human Q02153
Synonyms:	GCS-beta-1, GCS-beta-3, GUC1B3, GUCSB3, GUCY1B1, sGC beta
Protein Families:	Druggable Genome
Protein Pathways:	Gap junction, Long-term depression, Purine metabolism, Vascular smooth muscle contraction



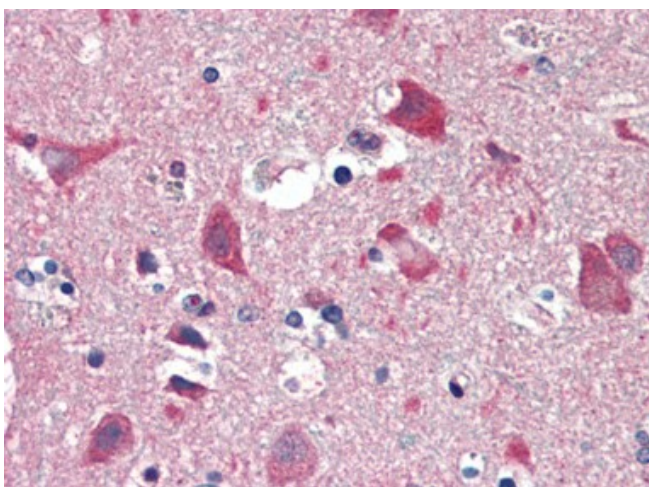
[View online »](#)

Product images:

Human cerebellum stained with Anti-GC beta (AP22710PU-N)



Human Brain, Cerebellum (formalin-fixed, paraffin-embedded) stained with GUCY1B3 antibody AP22710PU-N at 10 ug/ml followed by biotinylated goat anti-rabbit IgG secondary antibody, alkaline phosphatase-streptavidin and chromogen.



Human Brain, Cortex (formalin-fixed, paraffin-embedded) stained with GUCY1B3 antibody AP22710PU-N at 10 ug/ml followed by biotinylated goat anti-rabbit IgG secondary antibody, alkaline phosphatase-streptavidin and chromogen.