

Product datasheet for **AP22709PU-N**

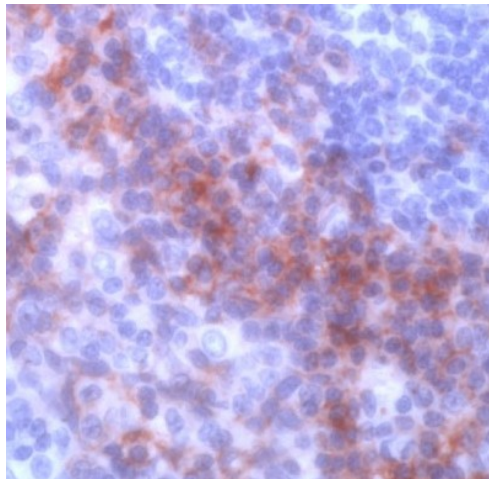
Syndecan 1 (SDC1) (18-218) Rabbit Polyclonal Antibody

Product data:

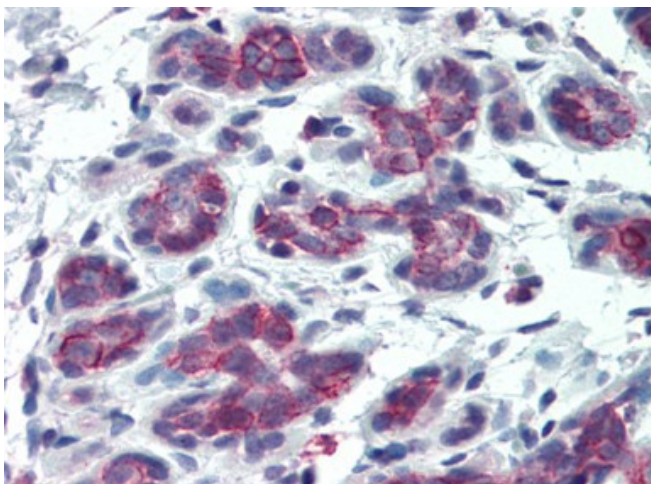
Product Type:	Primary Antibodies
Applications:	IHC
Recommended Dilution:	Immunohistochemistry on Paraffin Sections: 15 µg/ml.
Reactivity:	Human
Host:	Rabbit
Clonality:	Polyclonal
Immunogen:	SDC1 antibody was raised against recombinant protein encoding aa 18-218 human CD138
Specificity:	This antibody reacts to Syndecan-1 (SDC1).
Formulation:	10mM PBS/1% BSA buffer pH 7.4 with 0.09% sodium azide. State: Aff - Purified State: Liquid purified Ig fraction
Purification:	Immunoaffinity Chromatography
Conjugation:	Unconjugated
Storage:	Store the antibody undiluted at 2-8°C. DO NOT FREEZE!
Stability:	Shelf life: one year from despatch.
Gene Name:	syndecan 1
Database Link:	Entrez Gene 6382 Human P18827
Synonyms:	SYND1, SDC1, SDC
Protein Families:	Druggable Genome, ES Cell Differentiation/IPS, Transmembrane
Protein Pathways:	Cell adhesion molecules (CAMs), ECM-receptor interaction



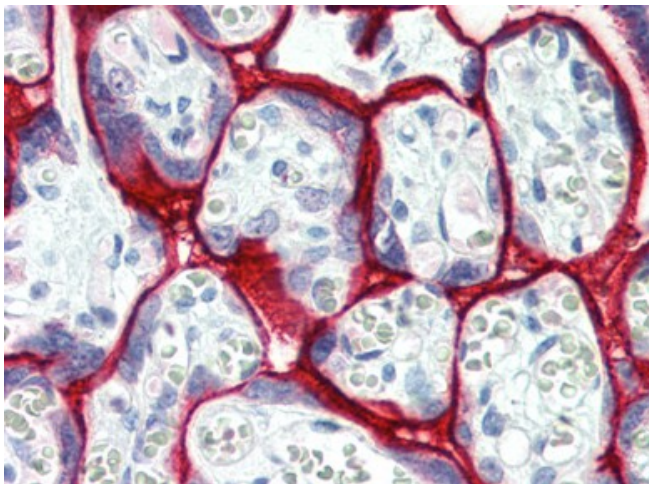
[View online »](#)

Product images:

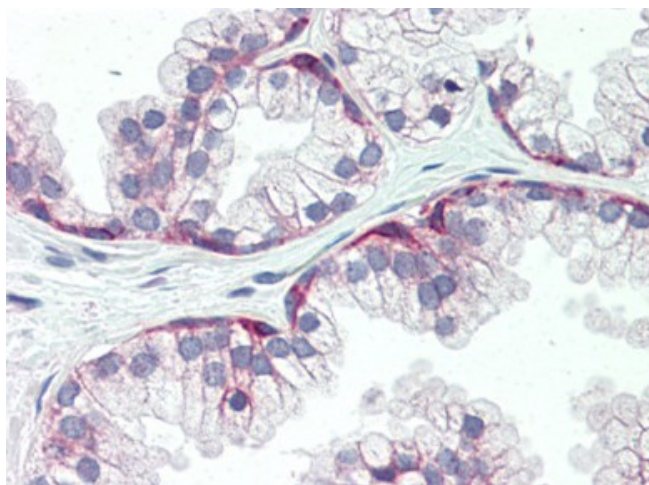
Tonsil stained with Anti-CD138



Human Breast (formalin-fixed, paraffin-embedded) stained with SDC1 antibody at 15 ug/ml followed by biotinylated goat anti-rabbit IgG secondary antibody, alkaline phosphatase-streptavidin and chromogen.



Human Placenta (formalin-fixed, paraffin-embedded) stained with SDC1 antibody at 15 ug/ml followed by biotinylated goat anti-rabbit IgG secondary antibody, alkaline phosphatase-streptavidin and chromogen.



Human Prostate (formalin-fixed, paraffin-embedded) stained with SDC1 antibody at 15 ug/ml followed by biotinylated goat anti-rabbit IgG secondary antibody, alkaline phosphatase-streptavidin and chromogen.