

## Product datasheet for **AP22702PU-N**

### Claudin 1 (CLDN1) (C-term) Rabbit Polyclonal Antibody

#### Product data:

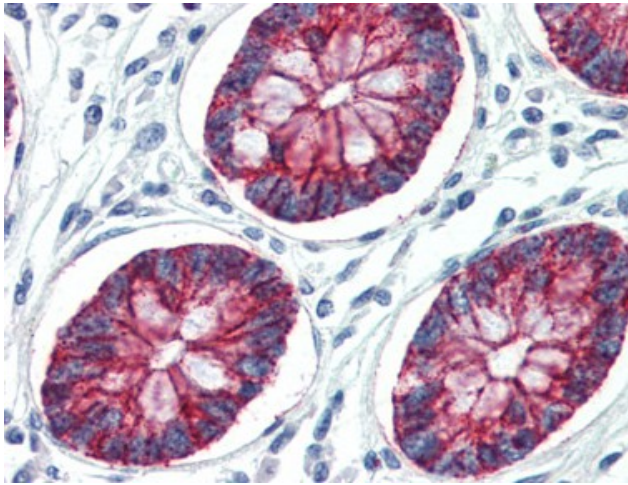
Product Type:	Primary Antibodies
Applications:	IHC
Recommended Dilution:	<b>Immunohistochemistry on Paraffin Sections:</b> 10 µg/ml (After heat induced antigen retrieval in pH 6.0 citrate buffer).
Reactivity:	Canine, Human, Monkey, Mouse, Rat
Host:	Rabbit
Clonality:	Polyclonal
Immunogen:	CLDN1 antibody was raised against a synthetic peptide derived from the C-terminus of human Claudin-1
Specificity:	This antibody reacts to Claudin 1 (CLDN1).
Formulation:	10 mM PBS, pH 7.4, 1% BSA, 0.09% sodium azide State: Purified State: Liquid purified Ig fraction
Concentration:	lot specific
Purification:	Immunoaffinity Chromatography
Conjugation:	Unconjugated
Storage:	Store the antibody undiluted at 2-8°C. DO NOT FREEZE!
Stability:	Shelf life: one year from despatch.
Gene Name:	claudin 1
Database Link:	<a href="#">Entrez Gene 12737 Mouse</a> <a href="#">Entrez Gene 65129 Rat</a> <a href="#">Entrez Gene 9076 Human</a> <a href="#">O95832</a>
Background:	Claudins are integral membrane proteins that constitute tight junctions found in endothelial and epithelial cells to determine vascular permeability
Synonyms:	CLD1, SEMP1, PRO944, UNQ481
Protein Families:	Transmembrane



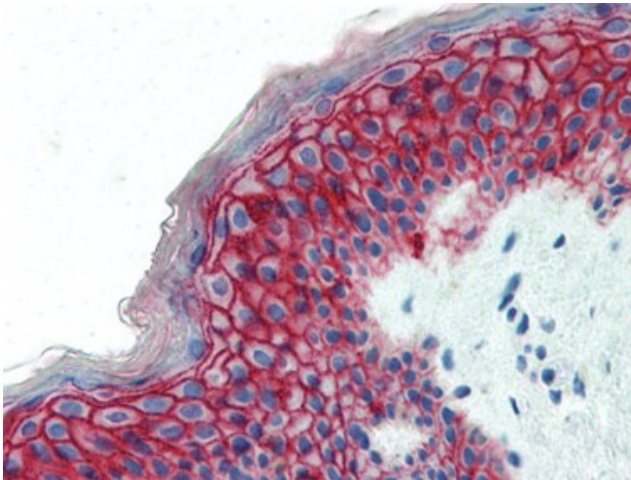
[View online »](#)

**Protein Pathways:** Cell adhesion molecules (CAMs), Leukocyte transendothelial migration, Pathogenic Escherichia coli infection, Tight junction

**Product images:**



Human Colon (formalin-fixed, paraffin-embedded) stained with CLDN1 antibody AP22702PU-N at 10 ug/ml followed by biotinylated goat anti-rabbit IgG secondary antibody, alkaline phosphatase-streptavidin and chromogen.



Human Skin (formalin-fixed, paraffin-embedded) stained with CLDN1 antibody AP22702PU-N at 10 ug/ml followed by biotinylated goat anti-rabbit IgG secondary antibody, alkaline phosphatase-streptavidin and chromogen.