

## Product datasheet for **AP22688PU-N**

### Fas Ligand (FASLG) (N-term) Rabbit Polyclonal Antibody

#### Product data:

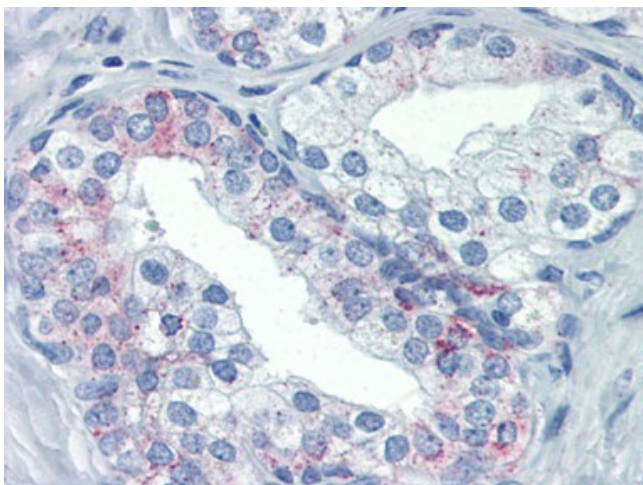
Product Type:	Primary Antibodies
Applications:	IHC, WB
Recommended Dilution:	<b>Immunohistochemistry on Paraffin Sections:</b> 5 µg/ml. <b>Western Blot.</b>
Reactivity:	Human, Mouse, Rat
Host:	Rabbit
Clonality:	Polyclonal
Immunogen:	FASLG antibody was raised against peptide mapping near the amino terminus of rat FAS-L
Specificity:	This antibody reacts to TNF Ligand Superfamily, Member 6 (FASLG).
Formulation:	PBS containing 0.09% sodium azide, 0.2% gelatin State: Aff - Purified State: Liquid purified Ig fraction
Concentration:	lot specific
Purification:	Immunoaffinity Chromatography
Conjugation:	Unconjugated
Storage:	Store the antibody undiluted at 2-8°C. DO NOT FREEZE!
Stability:	Shelf life: one year from despatch.
Gene Name:	Fas ligand
Database Link:	<a href="#">Entrez Gene 25385 Rat</a> <a href="#">Entrez Gene 356 Human</a> <a href="#">P48023</a>
Background:	Apoptosis antigen ligand 1 is the ligand for FAS. Both are transmembrane proteins. Interaction of FAS with its ligand is critical in triggering apoptosis of some types of cells such as lymphocytes. Defects in TNFSF6 may be related to some cases of systemic lupus erythematosus (SLE).
Synonyms:	FASLG, APT1LG1, FASL, TNFSF6, CD95L protein, APTL
Protein Families:	Druggable Genome, Secreted Protein, Transmembrane



[View online »](#)

**Protein Pathways:**

Allograft rejection, Apoptosis, Autoimmune thyroid disease, Cytokine-cytokine receptor interaction, Graft-versus-host disease, MAPK signaling pathway, Natural killer cell mediated cytotoxicity, Neurotrophin signaling pathway, Pathways in cancer, Type I diabetes mellitus

**Product images:**

Human Prostate (formalin-fixed, paraffin-embedded) stained with FASLG antibody AP22688PU-N at 5 ug/ml followed by biotinylated goat anti-rabbit IgG secondary antibody, alkaline phosphatase-streptavidin and chromogen.