

Product datasheet for **AP22686PU-N**

SRC (N-term) Rabbit Polyclonal Antibody

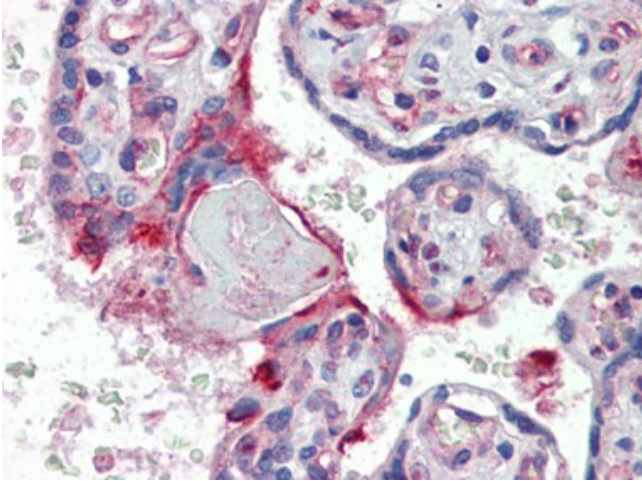
Product data:

Product Type:	Primary Antibodies
Applications:	IF, IHC, WB
Recommended Dilution:	Immunofluorescence: 1/10 - 1/50. Immunohistochemistry on Paraffin Sections: 5 µg/ml. Western Blot: 1/1000.
Reactivity:	Human, Mouse
Host:	Rabbit
Clonality:	Polyclonal
Immunogen:	SRC antibody was raised against kLH conjugated synthetic peptide selected from the N-terminal region of human SRC.
Specificity:	This antibody reacts to Proto-Oncogene Protein Tyrosine Kinase SRC (SRC).
Formulation:	PBS containing 0.09% sodium azide State: Purified State: Liquid purified Ig fraction
Purification:	Protein G Chromatography
Conjugation:	Unconjugated
Storage:	Store the antibody undiluted at 2-8°C for one month or (in aliquots) at -20°C for longer. Avoid repeated freezing and thawing.
Stability:	Shelf life: one year from despatch.
Gene Name:	SRC proto-oncogene, non-receptor tyrosine kinase
Database Link:	Entrez Gene 20779 Mouse Entrez Gene 6714 Human P12931
Background:	SRC is a non-receptor tyrosine kinase belonging to the Src subfamily. Src was the first proto-oncogene to be described and one of the first molecules demonstrated to have tyrosine kinase activity. Src is involved in a wide variety of cellular processes, including proliferation, differentiation, motility, and adhesion. Alternative splicing has been observed, including a neuron specific form with a 6 amino acid insert in the amino-terminal half of the c-src protein.

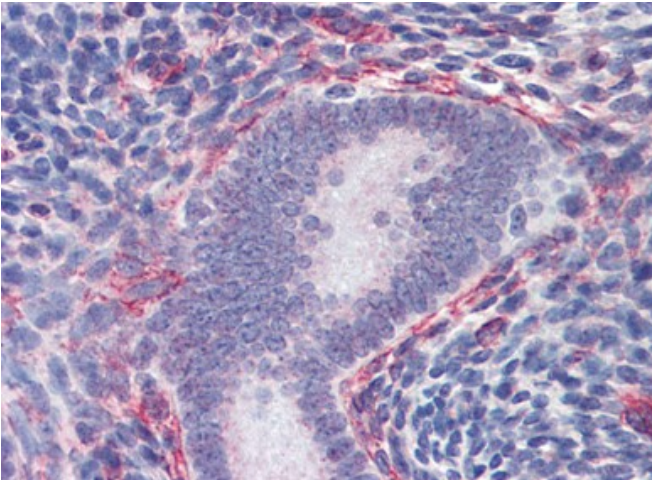


[View online »](#)

Synonyms:	c-Src, pp60c-src
Protein Families:	Druggable Genome, ES Cell Differentiation/IPS, Protein Kinase, Stem cell relevant signaling - JAK/STAT signaling pathway
Protein Pathways:	Adherens junction, Endocytosis, Epithelial cell signaling in Helicobacter pylori infection, ErbB signaling pathway, Focal adhesion, Gap junction, GnRH signaling pathway, Tight junction, VEGF signaling pathway

Product images:

Human Placenta (formalin-fixed, paraffin-embedded) stained with SRC antibody AP22686PU-N at 5 ug/ml followed by biotinylated goat anti-rabbit IgG secondary antibody, alkaline phosphatase-streptavidin and chromogen.



Human Uterus (formalin-fixed, paraffin-embedded) stained with SRC antibody AP22686PU-N at 5 ug/ml followed by biotinylated goat anti-rabbit IgG secondary antibody, alkaline phosphatase-streptavidin and chromogen.