

Product datasheet for **AP22683SU-N**

SRC (92-109) Rabbit Polyclonal Antibody

Product data:

Product Type:	Primary Antibodies
Applications:	IHC, WB
Recommended Dilution:	Immunohistochemistry on Paraffin Sections: 1/250. Western Blot: 1/1000.
Reactivity:	Bovine, Canine, Chicken, Guinea Pig, Hamster, Human, Monkey, Mouse, Porcine, Rabbit, Rat, Sheep, Trout, Xenopus, Bat, Equine
Host:	Rabbit
Clonality:	Polyclonal
Immunogen:	SRC antibody was raised against an 18 residue synthetic peptide based on the sequence from the SH3 domain of human Src (residues 92-109) was synthesized and the peptide coupled to KLH.
Specificity:	This antibody reacts to Proto-Oncogene Protein Tyrosine Kinase SRC (SRC) at 92-109.
Formulation:	State: Serum State: Liquid serum
Conjugation:	Unconjugated
Storage:	Store the antibody undiluted at 2-8°C for one month or (in aliquots) at -20°C for longer. Avoid repeated freezing and thawing.
Stability:	Shelf life: one year from despatch.
Gene Name:	SRC proto-oncogene, non-receptor tyrosine kinase
Database Link:	Entrez Gene 20779 Mouse Entrez Gene 83805 Rat Entrez Gene 6714 Human P12931
Background:	SRC is a non-receptor tyrosine kinase belonging to the Src subfamily. Src was the first proto-oncogene to be described and one of the first molecules demonstrated to have tyrosine kinase activity. Src is involved in a wide variety of cellular processes, including proliferation, differentiation, motility, and adhesion. Alternative splicing has been observed, including a neuron specific form with a 6 amino acid insert in the amino-terminal half of the c-src protein.
Synonyms:	c-Src, pp60c-src

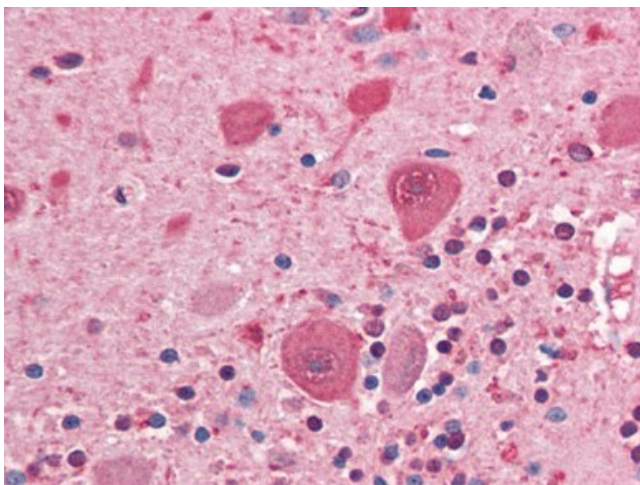


[View online »](#)

Protein Families: Druggable Genome, ES Cell Differentiation/IPS, Protein Kinase, Stem cell relevant signaling - JAK/STAT signaling pathway

Protein Pathways: Adherens junction, Endocytosis, Epithelial cell signaling in Helicobacter pylori infection, ErbB signaling pathway, Focal adhesion, Gap junction, GnRH signaling pathway, Tight junction, VEGF signaling pathway

Product images:



Human Brain, Cerebellum (formalin-fixed, paraffin-embedded) stained with SRC antibody AP22683SU-N at 1/250 followed by biotinylated goat anti-rabbit IgG secondary antibody, alkaline phosphatase-streptavidin and chromogen.