

## Product datasheet for **AP22678PU-N**

### CRMP1 (N-term) Rabbit Polyclonal Antibody

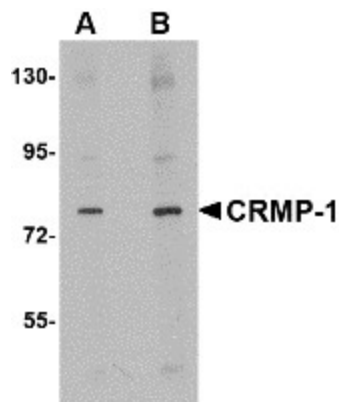
#### Product data:

Product Type:	Primary Antibodies
Applications:	ELISA, IHC, WB
Recommended Dilution:	<b>ELISA.</b> <b>Immunohistochemistry on Paraffin Sections:</b> 5 µg/ml. <b>Western Blot:</b> 1 - 2 µg/ml.
Reactivity:	Human, Mouse, Rat
Host:	Rabbit
Clonality:	Polyclonal
Immunogen:	CRMP1 antibody was raised against cRMP1 antibody was raised against an 18 amino acid peptide from near the amino terminus of human CRMP1.
Specificity:	This antibody is expected to recognize only the longest isoform of Collapsin Response Mediator Protein 1 (CRMP1).
Formulation:	PBS containing 0.02% sodium azide State: Purified State: Liquid purified Ig fraction
Concentration:	lot specific
Purification:	Immunoaffinity Chromatography
Conjugation:	Unconjugated
Storage:	Store the antibody undiluted at 2-8°C.
Stability:	Shelf life: one year from despatch.
Gene Name:	collapsin response mediator protein 1
Database Link:	<a href="#">Entrez Gene 12933 Mouse</a> <a href="#">Entrez Gene 25415 Rat</a> <a href="#">Entrez Gene 1400 Human Q14194</a>
Background:	This gene encodes a member of a family of cytosolic phosphoproteins expressed exclusively in the nervous system. The encoded protein is thought to be a part of the semaphorin signal transduction pathway implicated in semaphorin-induced growth cone collapse during neural development. Alternative splicing results in multiple transcript variants.
Synonyms:	Dihydropyrimidinase-related protein 1, DRP-1, Unc-33-like phosphoprotein 3, ULIP3

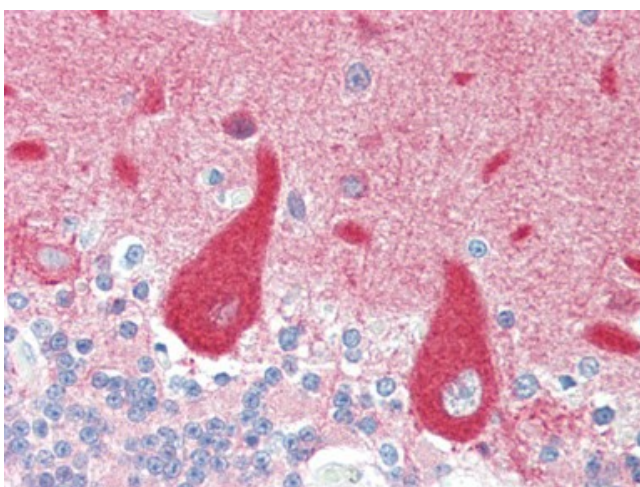


[View online »](#)

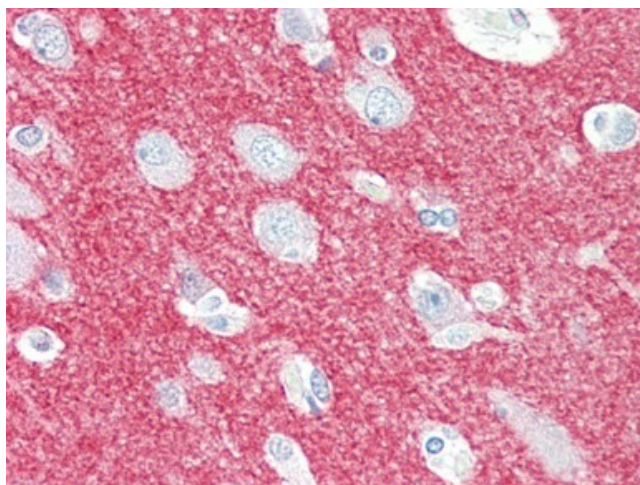
## Product images:



Western blot analysis of CRMP1 in rat brain tissue lysate with CRMP1 antibody (AP22678PU-N) at (A) 1 and (B) 2 ug/ml



Human Brain, Cerebellum (formalin-fixed, paraffin-embedded) stained with CRMP1 antibody AP22678PU-N at 5 ug/ml followed by biotinylated goat anti-rabbit IgG secondary antibody, alkaline phosphatase-streptavidin and chromogen.



Human Brain, Cortex (formalin-fixed, paraffin-embedded) stained with CRMP1 antibody AP22678PU-N at 5 ug/ml followed by biotinylated goat anti-rabbit IgG secondary antibody, alkaline phosphatase-streptavidin and chromogen.