

Product datasheet for **AP22677PU-N**

LIMPII (SCARB2) Rabbit Polyclonal Antibody

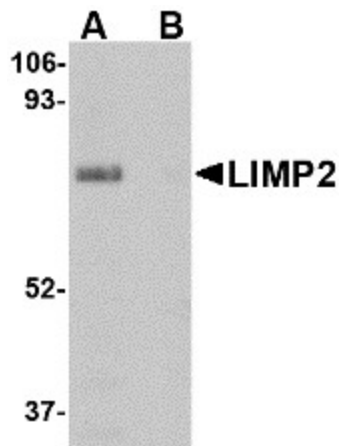
Product data:

Product Type:	Primary Antibodies
Applications:	ELISA, IHC, WB
Recommended Dilution:	ELISA. Immunohistochemistry on Paraffin Sections: 5 µg/ml. Western Blot: 1 - 2 µg/ml.
Reactivity:	Human, Mouse, Rat
Host:	Rabbit
Clonality:	Polyclonal
Immunogen:	SCARB2 antibody was raised against 16 amino acid peptide from near the center of human LIMP2
Specificity:	This antibody reacts to Lysosome Membrane Protein II (SCARB2).
Formulation:	PBS containing 0.02% sodium azide. State: Purified State: Liquid purified Ig fraction
Concentration:	lot specific
Purification:	Immunoaffinity Chromatography
Conjugation:	Unconjugated
Storage:	Store the antibody undiluted at 2-8°C.
Stability:	Shelf life: one year from despatch.
Gene Name:	scavenger receptor class B member 2
Database Link:	Entrez Gene 12492 Mouse Entrez Gene 117106 Rat Entrez Gene 950 Human Q14108
Synonyms:	LIMPII, LIMP II, LGP85, CD36L2, SRB2, SR-BII, LIMP2
Protein Families:	Druggable Genome, Transmembrane
Protein Pathways:	Lysosome

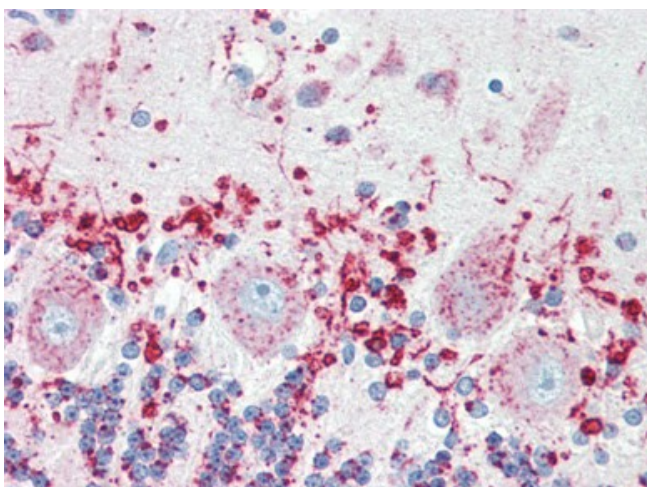


[View online »](#)

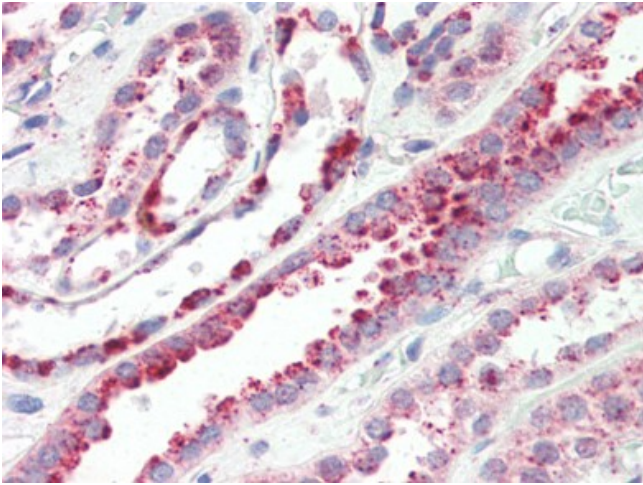
Product images:



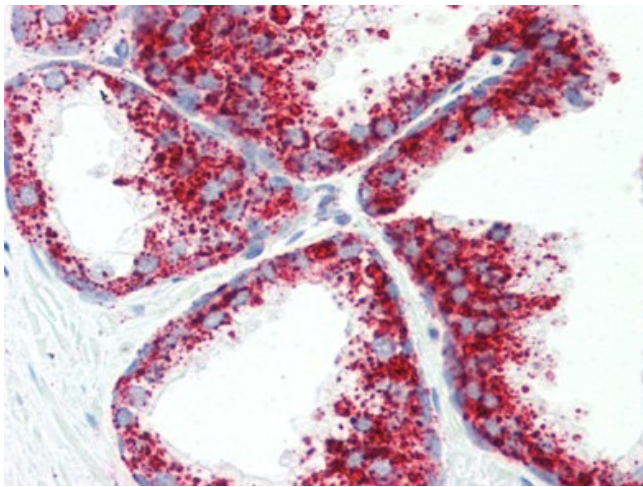
Western blot analysis of LIMP2 in human skeletal muscle tissue lysate with LIMP2 antibody at 1 ug/ml in (A) the absence and (B) presence of blocking peptide.



Human Brain, Cerebellum (formalin-fixed, paraffin-embedded) stained with SCARB2 antibody at 5 ug/ml followed by biotinylated goat anti-rabbit IgG secondary antibody, alkaline phosphatase-streptavidin and chromogen.



Human Kidney (formalin-fixed, paraffin-embedded) stained with SCARB2 antibody at 5 ug/ml followed by biotinylated goat anti-rabbit IgG secondary antibody, alkaline phosphatase-streptavidin and chromogen.



Human Prostate (formalin-fixed, paraffin-embedded) stained with SCARB2 antibody at 5 ug/ml followed by biotinylated goat anti-rabbit IgG secondary antibody, alkaline phosphatase-streptavidin and chromogen.