

Product datasheet for **AP22676PU-N**

AMBRA1 (C-term) Rabbit Polyclonal Antibody

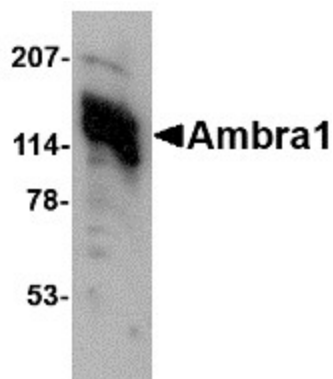
Product data:

| | |
|-----------------------|---|
| Product Type: | Primary Antibodies |
| Applications: | ELISA, IHC, WB |
| Recommended Dilution: | ELISA. Immunohistochemistry on Paraffin Sections: 5 µg/ml. Western Blot: 1 - 2 µg/ml. |
| Reactivity: | Human, Mouse, Rat |
| Host: | Rabbit |
| Clonality: | Polyclonal |
| Immunogen: | AMBRA1 antibody was raised against 15 amino acid peptide from near the carboxy terminus of human Ambra1 |
| Specificity: | This antibody reacts to Activating Molecule in Beclin-1-Regulated Autophagy (AMBRA1). |
| Formulation: | PBS containing 0.02% sodium azide. State: Purified State: Liquid purified Ig fraction |
| Concentration: | lot specific |
| Purification: | Immunoaffinity Chromatography |
| Conjugation: | Unconjugated |
| Storage: | Store the antibody undiluted at 2-8°C. |
| Stability: | Shelf life: one year from despatch. |
| Gene Name: | autophagy and beclin 1 regulator 1 |
| Database Link: | Entrez Gene 59319 Rat Entrez Gene 228361 Mouse Entrez Gene 55626 Human Q9C0C7 |
| Synonyms: | KIAA1736 |

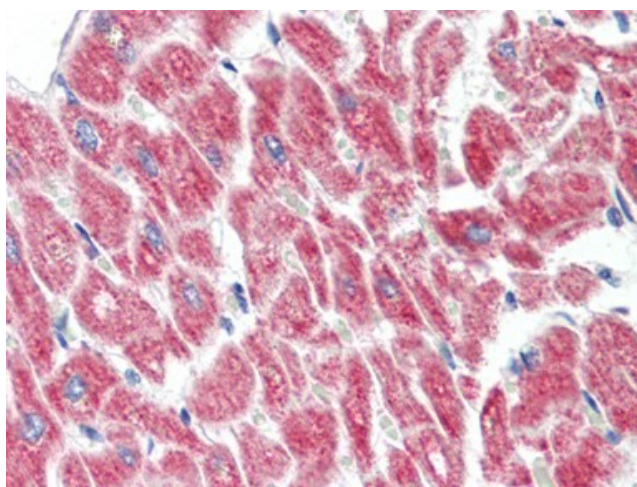


[View online »](#)

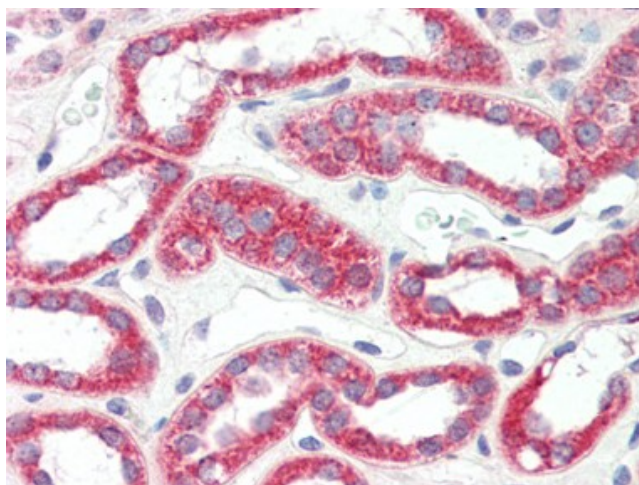
Product images:



Western blot analysis of Ambra1 in human heart tissue lysate with Ambra1 antibody (AP22676PU-N) at (A) 0.5 and (B) 1 μ g/ml.



Human Heart (formalin-fixed, paraffin-embedded) stained with AMBRA1 antibody AP22676PU-N at 5 μ g/ml followed by biotinylated goat anti-rabbit IgG secondary antibody, alkaline phosphatase-streptavidin and chromogen.



Human Kidney (formalin-fixed, paraffin-embedded) stained with AMBRA1 antibody AP22676PU-N at 5 ug/ml followed by biotinylated goat anti-rabbit IgG secondary antibody, alkaline phosphatase-streptavidin and chromogen.