

Product datasheet for **AP22675PU-N**

LGI4 Rabbit Polyclonal Antibody

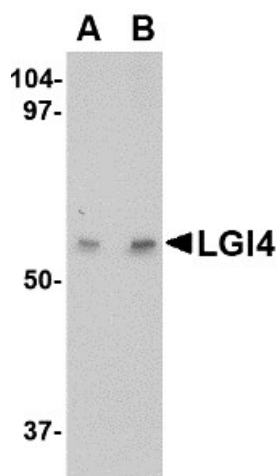
Product data:

| | |
|-----------------------|--|
| Product Type: | Primary Antibodies |
| Applications: | ELISA, IHC, WB |
| Recommended Dilution: | ELISA. Immunohistochemistry on Paraffin Sections: 5 µg/ml. Western Blot: 1 - 2 µg/ml. |
| Reactivity: | Human, Mouse, Rat |
| Host: | Rabbit |
| Clonality: | Polyclonal |
| Immunogen: | LGI4 antibody was raised against 14 amino acid peptide from near the center of human LGI4 |
| Specificity: | This antibody reacts to Leucine-rich Repeat LGI Family Member 4 (LGI4). |
| Formulation: | PBS containing 0.02% sodium azide. State: Purified State: Liquid purified Ig fraction |
| Concentration: | lot specific |
| Purification: | Immunoaffinity Chromatography |
| Conjugation: | Unconjugated |
| Storage: | Store the antibody undiluted at 2-8°C. |
| Stability: | Shelf life: one year from despatch. |
| Gene Name: | leucine-rich repeat LGI family member 4 |
| Database Link: | Entrez Gene 243914 Mouse Entrez Gene 361549 Rat Entrez Gene 163175 Human Q8N135 |
| Synonyms: | LGI4, LGIL3, Leucine-rich repeat LGI family member 4, Leucine-rich glioma-inactivated protein 4, LGI1-like protein 3 |

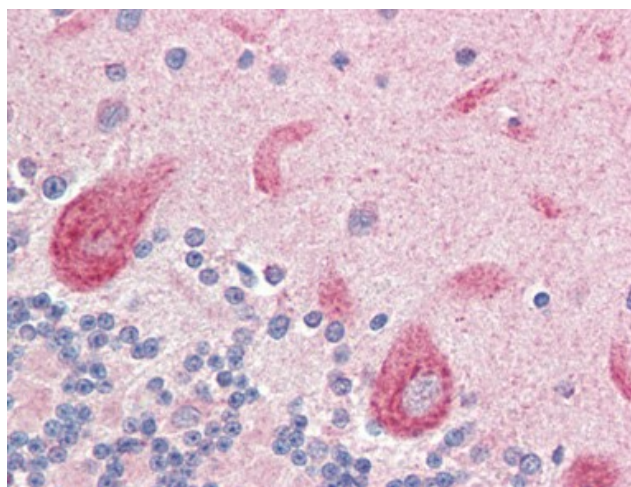


[View online »](#)

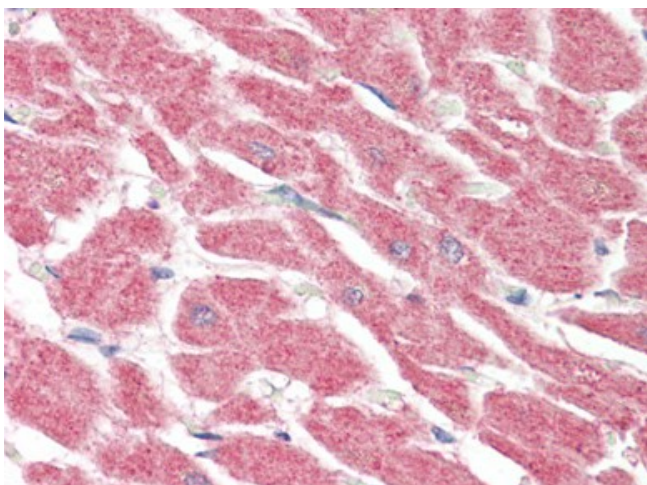
Product images:



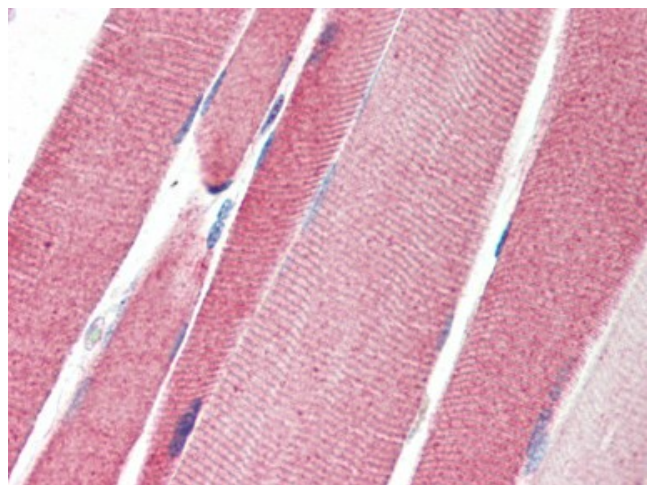
Western blot analysis of LGI4 in human brain tissue lysate with LGI4 antibody (AP22675PU-N) at (A) 1 and (B) 2 ug/ml.



Human Brain, Cerebellum (formalin-fixed, paraffin-embedded) stained with LGI4 antibody AP22675PU-N at 5 ug/ml followed by biotinylated goat anti-rabbit IgG secondary antibody, alkaline phosphatase-streptavidin and chromogen.



Human Heart (formalin-fixed, paraffin-embedded) stained with LGI4 antibody AP22675PU-N at 5 ug/ml followed by biotinylated goat anti-rabbit IgG secondary antibody, alkaline phosphatase-streptavidin and chromogen.



Human Skeletal Muscle (formalin-fixed, paraffin-embedded) stained with LGI4 antibody AP22675PU-N at 5 ug/ml followed by biotinylated goat anti-rabbit IgG secondary antibody, alkaline phosphatase-streptavidin and chromogen.