

## Product datasheet for **AP22673PU-N**

### SIRT2 (C-term) Rabbit Polyclonal Antibody

#### Product data:

Product Type:	Primary Antibodies
Applications:	ELISA, IHC, WB
Recommended Dilution:	<b>ELISA.</b> <b>Immunohistochemistry on Paraffin Sections:</b> 5 µg/ml. <b>Western Blot:</b> 1 - 2 µg/ml.
Reactivity:	Human, Mouse, Rat
Host:	Rabbit
Clonality:	Polyclonal
Immunogen:	SIRT2 antibody was raised against 19 amino acid peptide near the carboxy terminus of the Human SIRT2
Specificity:	This antibody detects SIRT2 / SIR2 at C-term.
Formulation:	PBS containing 0.02% Sodium Azide State: Purified State: Liquid purified Ig fraction
Concentration:	lot specific
Purification:	Immunoaffinity Chromatography
Conjugation:	Unconjugated
Storage:	Store the antibody undiluted at 2-8°C.
Stability:	Shelf life: one year from despatch.
Gene Name:	sirtuin 2
Database Link:	<a href="#">Entrez Gene 64383 Mouse</a> <a href="#">Entrez Gene 361532 Rat</a> <a href="#">Entrez Gene 22933 Human</a> <a href="#">Q8IXJ6</a>



[View online »](#)

**Background:**

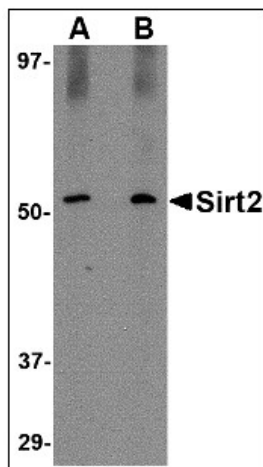
The founding member of the sirtuin protein family was the silent information regulator 2 protein (Sir2p) of *Saccharomyces cerevisiae*, an NAD<sup>+</sup>-dependent histone deacetylase (HDAC) that regulates chromatin silencing. The SIR2 family of genes are highly conserved from prokaryotes to eukaryotes. Mammals have seven homologs of Sir2p, SIRT1-7, which are involved in diverse processes ranging from transcriptional regulation, cell cycle progression and DNA-damage repair to aging. SIRT2 is a predominantly cytoplasmic protein that colocalizes with microtubules and can deacetylate  $\alpha$ -tubulin and regulate progression through the cell cycle. Most Sirtuins are highly expressed in brain and testis, while Sirt2 expression is higher in fetal relative to adult brain. Recent studies on SIRT2 support the therapeutic utility of inhibitors for the treatment of neurodegenerative diseases such as Parkinson's disease.

**Synonyms:**

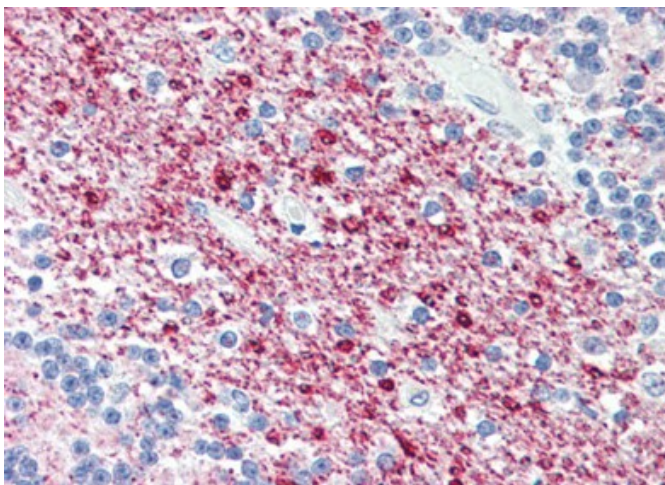
SIRT-2, SIR2-like protein 2, SIR2L, SIR2L2, sirtuin type 2, sirtuin 2, sirtuin-2

**Protein Families:**

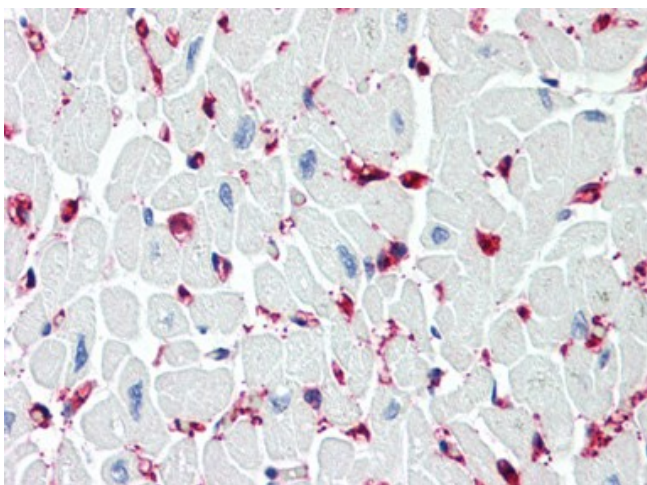
Druggable Genome, Transcription Factors

**Product images:**

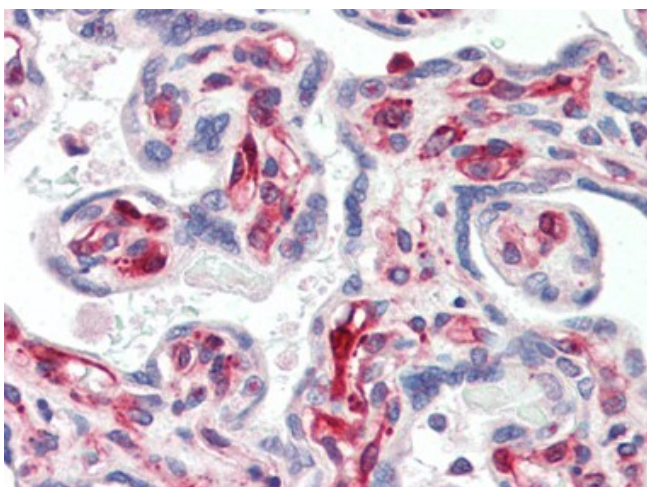
Western blot analysis of SIRT2 in Mouse brain lysate with SIRT2 antibody at (A) 1 and (B) 2 ug/ml.



Human Brain, Cerebellum (formalin-fixed, paraffin-embedded) stained with SIRT2 antibody at 5 ug/ml followed by biotinylated goat anti-rabbit IgG secondary antibody, alkaline phosphatase-streptavidin and chromogen.



Human Heart (formalin-fixed, paraffin-embedded) stained with SIRT2 antibody at 5 ug/ml followed by biotinylated goat anti-rabbit IgG secondary antibody, alkaline phosphatase-streptavidin and chromogen.



Human Placenta (formalin-fixed, paraffin-embedded) stained with SIRT2 antibody at 5 ug/ml followed by biotinylated goat anti-rabbit IgG secondary antibody, alkaline phosphatase-streptavidin and chromogen.