

## Product datasheet for **AP22670PU-N**

### SLITRK2 (C-term) Rabbit Polyclonal Antibody

#### Product data:

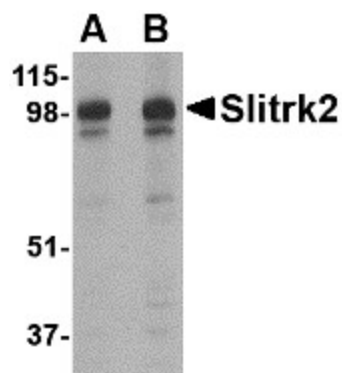
Product Type:	Primary Antibodies
Applications:	ELISA, IHC, WB
Recommended Dilution:	<b>ELISA.</b> <b>Immunohistochemistry on Paraffin Sections:</b> 5 µg/ml. <b>Western Blot:</b> 1 - 2 µg/ml.
Reactivity:	Human, Mouse, Rat
Host:	Rabbit
Clonality:	Polyclonal
Immunogen:	SLITRK2 antibody was raised against 17 amino acid peptide from near the carboxy terminus of human Slitrk2
Specificity:	This antibody reacts to SLIT and NTRK-like Family, Member 2.
Formulation:	PBS containing 0.02% sodium azide. State: Purified State: Liquid purified Ig fraction
Concentration:	lot specific
Purification:	Immunoaffinity Chromatography
Conjugation:	Unconjugated
Storage:	Store the antibody undiluted at 2-8°C.
Stability:	Shelf life: one year from despatch.
Gene Name:	Homo sapiens SLIT and NTRK like family member 2 (SLITRK2), transcript variant 2
Database Link:	<a href="#">Entrez Gene 245450 Mouse</a> <a href="#">Entrez Gene 309349 Rat</a> <a href="#">Entrez Gene 84631 Human Q9H156</a>
Background:	Members of the SLITRK family, such as SLITRK2, are integral membrane proteins with 2 N-terminal leucine-rich repeat (LRR) domains similar to those of SLIT proteins. Most SLITRKs, including SLITRK2, also have C-terminal regions that share homology with neurotrophin receptors. SLITRKs are expressed predominantly in neural tissues and have neurite-modulating activity.
Synonyms:	CXorf2, KIAA1854, SLITL1



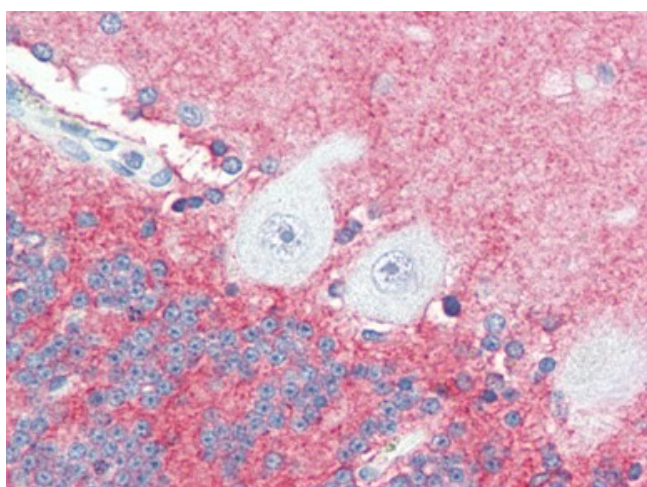
[View online »](#)

Protein Families: Transmembrane

### Product images:



Western blot analysis of Slitrk2 in rat brain tissue lysate with Slitrk2 antibody (AP22670PU-N) at (A) 1 and (B) 2 ug/ml.



Human Brain, Cerebellum (formalin-fixed, paraffin-embedded) stained with SLITRK2 antibody AP22670PU-N at 5 ug/ml followed by biotinylated goat anti-rabbit IgG secondary antibody, alkaline phosphatase-streptavidin and chromogen.