

Product datasheet for **AP22669PU-N**

SLITRK1 (C-term) Rabbit Polyclonal Antibody

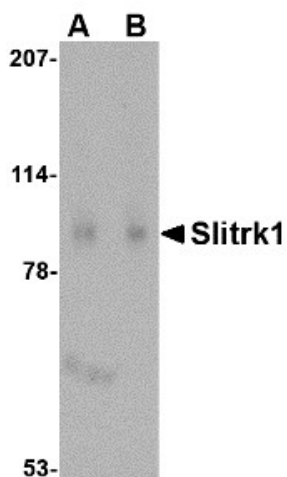
Product data:

Product Type:	Primary Antibodies
Applications:	ELISA, IHC, WB
Recommended Dilution:	ELISA. Immunohistochemistry on Paraffin Sections: 5 µg/ml. Western Blot: 1 - 2 µg/ml.
Reactivity:	Human, Mouse, Rat
Host:	Rabbit
Clonality:	Polyclonal
Immunogen:	SLITRK1 antibody was raised against 16 amino acid peptide from near the carboxy terminus of human Slitrk1
Specificity:	This antibody reacts to Slit And Trk Like 1 Protein (SLITRK1).
Formulation:	PBS containing 0.02% sodium azide. State: Purified State: Liquid purified Ig fraction
Concentration:	lot specific
Purification:	Immunoaffinity Chromatography
Conjugation:	Unconjugated
Storage:	Store the antibody undiluted at 2-8°C.
Stability:	Shelf life: one year from despatch.
Gene Name:	SLIT and NTRK like family member 1
Database Link:	Entrez Gene 76965 Mouse Entrez Gene 306147 Rat Entrez Gene 114798 Human Q96PX8
Synonyms:	KIAA1910, LRRC12
Protein Families:	Transmembrane

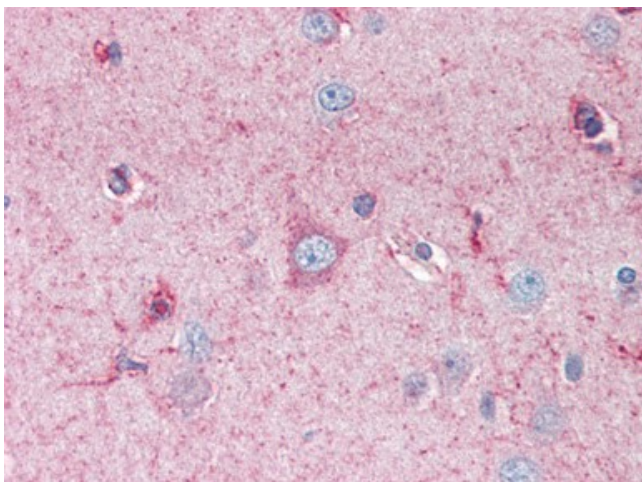


[View online »](#)

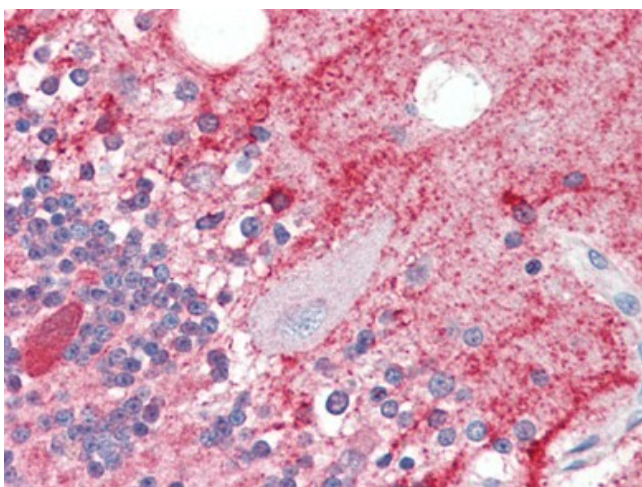
Product images:



Western blot analysis of Slitrk1 in human brain tissue lysate with Slitrk1 antibody (AP22669PU-N) at (A) 1 and (B) 2 ug/ml.



Human Brain, Cortex (formalin-fixed, paraffin-embedded) stained with SLITRK1 antibody AP22669PU-N at 5 ug/ml followed by biotinylated goat anti-rabbit IgG secondary antibody, alkaline phosphatase-streptavidin and chromogen.



Human Brain, Cerebellum (formalin-fixed, paraffin-embedded) stained with SLITRK1 antibody AP22669PU-N at 5 ug/ml followed by biotinylated goat anti-rabbit IgG secondary antibody, alkaline phosphatase-streptavidin and chromogen.