

Product datasheet for **AP22664PU-N**

RASD2 (N-term) Rabbit Polyclonal Antibody

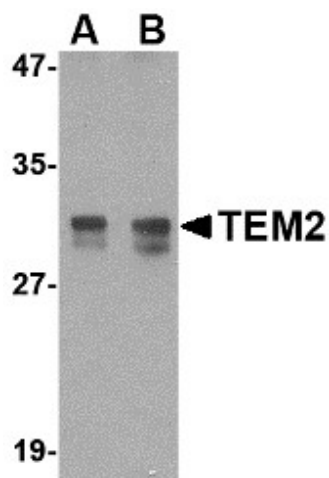
Product data:

Product Type:	Primary Antibodies
Applications:	ELISA, IHC, WB
Recommended Dilution:	ELISA. Immunohistochemistry on Paraffin Sections: 2.5 µg/ml. Western Blot: 1 - 2 µg/ml.
Reactivity:	Human, Mouse, Rat
Host:	Rabbit
Clonality:	Polyclonal
Immunogen:	RASD2 antibody was raised against 16 amino acid peptide near the amino terminus of the human TEM2
Specificity:	This antibody reacts to Tumor Endothelial Marker 2 (TEM2) (RASD2).
Formulation:	PBS containing 0.02% sodium azide. State: Purified State: Liquid purified Ig fraction
Concentration:	lot specific
Purification:	Immunoaffinity Chromatography
Conjugation:	Unconjugated
Storage:	Store the antibody undiluted at 2-8°C.
Stability:	Shelf life: one year from despatch.
Gene Name:	RASD family member 2
Database Link:	Entrez Gene 75141 Mouse Entrez Gene 171099 Rat Entrez Gene 23551 Human Q96D21
Synonyms:	MGC:4834; Rhes; TEM2
Protein Families:	Druggable Genome

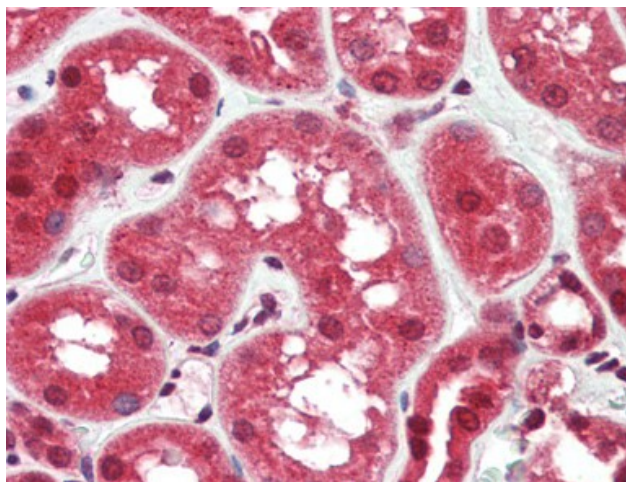


[View online »](#)

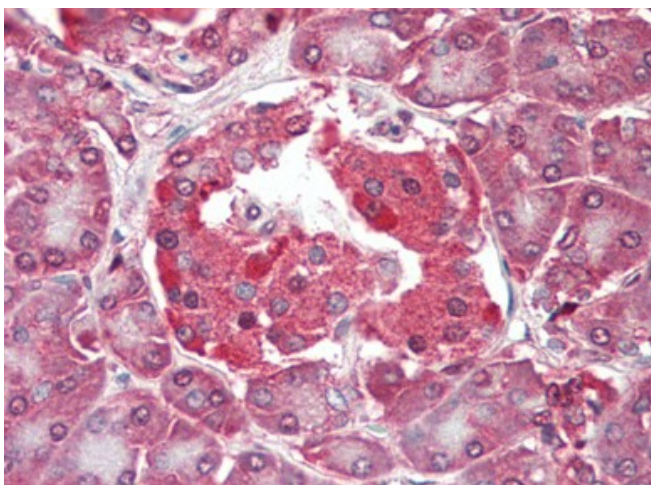
Product images:



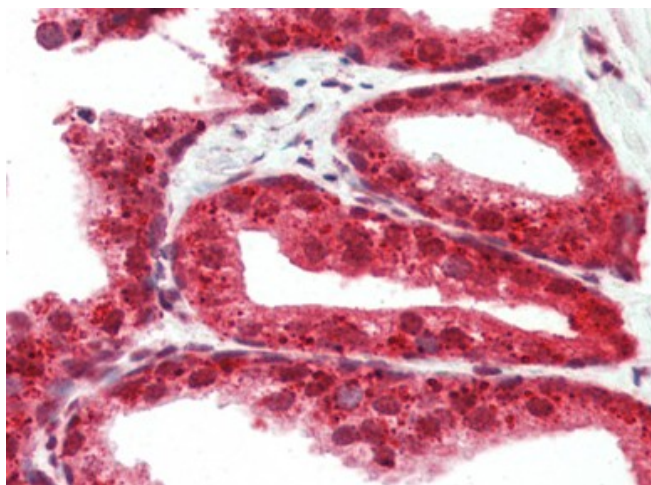
Western blot analysis of TEM2 in rat colon tissue lysate with TEM2 antibody (AP22664PU-N) at (A) 1 and (B) 2 ug/ml.



Human Kidney (formalin-fixed, paraffin-embedded) stained with RASD2 antibody AP22664PU-N at 2.5 ug/ml followed by biotinylated goat anti-rabbit IgG secondary antibody, alkaline phosphatase-streptavidin and chromogen.



Human Pancreas (formalin-fixed, paraffin-embedded) stained with RASD2 antibody AP22664PU-N at 2.5 ug/ml followed by biotinylated goat anti-rabbit IgG secondary antibody, alkaline phosphatase-streptavidin and chromogen.



Human Prostate (formalin-fixed, paraffin-embedded) stained with RASD2 antibody AP22664PU-N at 2.5 ug/ml followed by biotinylated goat anti-rabbit IgG secondary antibody, alkaline phosphatase-streptavidin and chromogen.