

Product datasheet for **AP22658PU-N**

Lass5 (CERS5) (C-term) Rabbit Polyclonal Antibody

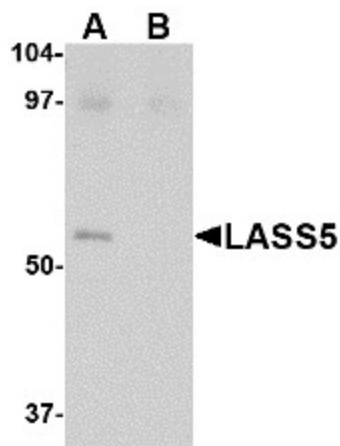
Product data:

Product Type:	Primary Antibodies
Applications:	ELISA, IHC, WB
Recommended Dilution:	ELISA. Immunohistochemistry on Paraffin Sections: 5 µg/ml. Western Blot: 1 - 2 µg/ml.
Reactivity:	Human, Mouse, Rat
Host:	Rabbit
Clonality:	Polyclonal
Immunogen:	LASS5 antibody was raised against LASS5 antibody was raised against a 17 amino acid peptide near the carboxy terminus of the human LASS5.
Specificity:	This antibody reacts to LAG1 Homolog, Ceramide Synthase 5 (LASS5).
Formulation:	PBS containing 0.02% sodium azide State: Purified State: Liquid purified Ig fraction
Concentration:	lot specific
Purification:	Immunoaffinity Chromatography
Conjugation:	Unconjugated
Storage:	Store the antibody undiluted at 2-8°C.
Stability:	Shelf life: one year from despatch.
Gene Name:	ceramide synthase 5
Database Link:	Entrez Gene 71949 Mouse Entrez Gene 366984 Rat Entrez Gene 91012 Human Q8N5B7
Synonyms:	LASS5, LAG1 longevity assurance homolog 5, TRH4, TRAM homolog 4
Protein Families:	Transcription Factors, Transmembrane

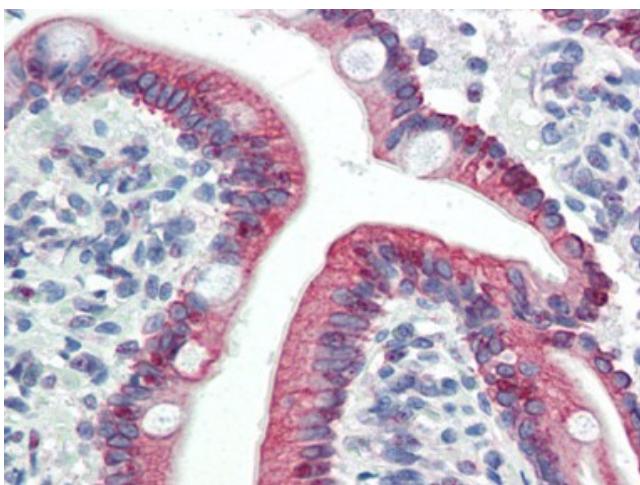


[View online »](#)

Product images:



Western blot analysis of LASS5 in SK-N-SH lysate with LASS5 antibody (AP22658PU-N) at 1 ug/ml in the (A) absence and (B) presence of blocking peptide.



Human Small Intestine (formalin-fixed, paraffin-embedded) stained with LASS5 antibody AP22658PU-N at 5 ug/ml followed by biotinylated goat anti-rabbit IgG secondary antibody, alkaline phosphatase-streptavidin and chromogen.