

Product datasheet for **AP22655PU-N**

alpha 2 Macroglobulin (A2M) (C-term) Rabbit Polyclonal Antibody

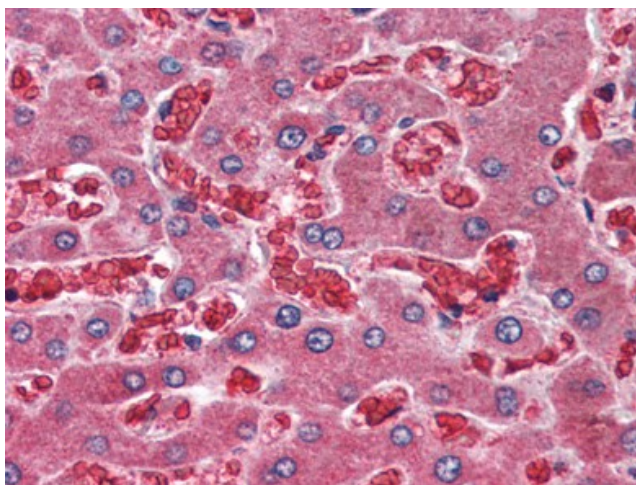
Product data:

Product Type:	Primary Antibodies
Applications:	ELISA, IHC, WB
Recommended Dilution:	ELISA. Immunohistochemistry on Paraffin Sections: 10 µg/ml. Western Blot: 1 µg/ml.
Reactivity:	Human, Rat
Host:	Rabbit
Clonality:	Polyclonal
Immunogen:	Synthetic peptide corresponding to C-terminal residues of Human A2M (Alpha-2-macroglobulin precursor)
Specificity:	This antibody recognizes Alpha-2-macroglobulin (A2M).
Formulation:	PBS State: Purified State: Liquid purified Ig fraction Stabilizer: 50% Glycerol Preservative: 0.01% Sodium Azide
Concentration:	lot specific
Purification:	Immunoaffinity Chromatography
Conjugation:	Unconjugated
Storage:	Store the antibody undiluted at 2-8°C for one month or (in aliquots) at -20°C for longer. Avoid repeated freezing and thawing.
Stability:	Shelf life: one year from despatch.
Gene Name:	alpha-2-macroglobulin
Database Link:	Entrez Gene 24153 Rat Entrez Gene 2 Human P01023



[View online »](#)

Background:	Alpha-2-macroglobulin is a protease inhibitor and cytokine transporter. It inhibits many proteases, including trypsin, thrombin and collagenase. A2M is implicated in Alzheimer disease (AD) due to its ability to mediate the clearance and degradation of A-beta, the major component of beta-amyloid deposits.
Synonyms:	Alpha-2-M, CPAMD5, Alpha 2 macroglobulin
Protein Families:	Druggable Genome, Secreted Protein
Protein Pathways:	Complement and coagulation cascades

Product images:

Human Liver (formalin-fixed, paraffin-embedded) stained with A2M antibody at 10 ug/ml followed by biotinylated goat anti-rabbit IgG secondary antibody, alkaline phosphatase-streptavidin and chromogen.