

Product datasheet for **AP22650PU-N**

BMP4 Rabbit Polyclonal Antibody

Product data:

Product Type:	Primary Antibodies
Applications:	IHC, WB
Recommended Dilution:	Immunohistochemistry on Paraffin Sections: 5 µg/ml. Western Blot: 0.5 - 4 µg/ml.
Reactivity:	Chicken, Human, Mouse, Rabbit, Rat
Host:	Rabbit
Clonality:	Polyclonal
Immunogen:	Synthetic peptide surrounding amino acid 395 of Human BMP-4
Specificity:	This antibody recognizes Bone Morphogenetic Protein 4 (BMP4).
Formulation:	PBS, pH 7.2 containing 30% Glycerol, 0.5% BSA, 0.01% Thimerosal State: Aff - Purified State: Liquid purified Ig fraction
Concentration:	lot specific
Purification:	Affinity Chromatography
Conjugation:	Unconjugated
Storage:	Upon receipt, store the antibody at -20°C or (in aliquots) at -70°C for longer. Avoid repeated freezing and thawing.
Stability:	Shelf life: one year from despatch.
Gene Name:	bone morphogenetic protein 4
Database Link:	Entrez Gene 12159 Mouse Entrez Gene 25296 Rat Entrez Gene 652 Human P12644
Background:	Bone morphogenetic proteins were originally identified by an ability of demineralized bone extract to induce endochondral osteogenesis in vivo in an extraskeletal site. Through molecular cloning, 7 BMP cDNAs, designated BMP1 through BMP7, have been recovered. BMP2 through BMP7, are members of the transforming growth factor-beta superfamily of regulatory molecules. Transcript variants utilizing alternative promoters and alternative non-coding first exons have been described in the literature.
Synonyms:	BMP2B, BMP-2B, BMP-4, DVR4, Bone morphogenetic protein 4

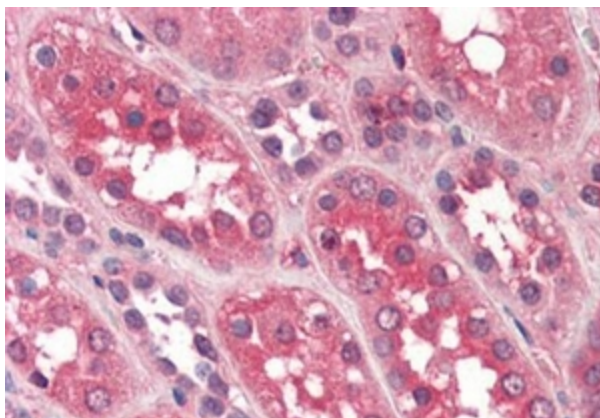


[View online »](#)

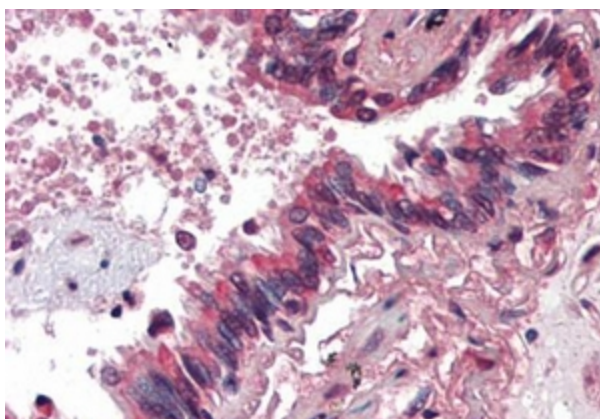
Protein Families: Adult stem cells, Cancer stem cells, Druggable Genome, Embryonic stem cells, Induced pluripotent stem cells, Secreted Protein, Stem cell relevant signaling - TGFb/BMP signaling pathway

Protein Pathways: Basal cell carcinoma, Hedgehog signaling pathway, Pathways in cancer, TGF-beta signaling pathway

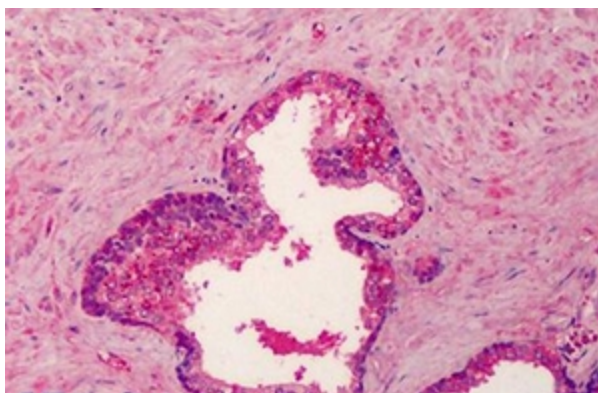
Product images:



Formalin-Fixed, Paraffin-Embedded Human Kidney stained with BMP4 antibody at 5 ug/ml after heat-induced antigen retrieval.



Formalin-Fixed, Paraffin-Embedded Human Lung stained with BMP4 antibody at 5 ug/ml after heat-induced antigen retrieval.



Formalin-Fixed, Paraffin-Embedded Human Placenta stained with BMP4 antibody at 5 ug/ml after heat-induced antigen retrieval.