

Product datasheet for **AP22644PU-N**

ROCK2 Rabbit Polyclonal Antibody

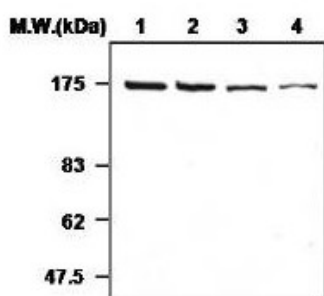
Product data:

Product Type:	Primary Antibodies
Applications:	IHC, WB
Recommended Dilution:	Immunohistochemistry on Paraffin Sections: 1/100. Western Blot: 1/2000.
Reactivity:	Human, Mouse, Rat
Host:	Rabbit
Isotype:	IgG
Clonality:	Polyclonal
Immunogen:	ROCK2 antibody was raised against synthetic peptide
Specificity:	This antibody reacts to Rho-Associated, Coiled-Coil Containing Protein Kinase 2 (ROCK2).
Formulation:	HEPES with 0.15M NaCl, 0.01% BSA, 0.03% sodium azide, and 50% glycerol State: Purified State: Liquid purified Ig fraction
Conjugation:	Unconjugated
Storage:	Store the antibody undiluted at 2-8°C for one month or (in aliquots) at -20°C for longer. Avoid repeated freezing and thawing.
Stability:	Shelf life: one year from despatch.
Gene Name:	Rho associated coiled-coil containing protein kinase 2
Database Link:	Entrez Gene 19878 Mouse Entrez Gene 25537 Rat Entrez Gene 9475 Human O75116
Background:	ROCK2 is a ROCK protein serine/threonine kinase that is one of the targets for the small GTPase Rho. ROCK2 regulates the formation of actin stress fibers and focal adhesions, cytokinesis, smooth muscle contraction, and the activation of c-fos serum response element.
Synonyms:	ROCK-2, p164ROCK-2, KIAA0619
Protein Families:	Druggable Genome, Protein Kinase
Protein Pathways:	Axon guidance, Chemokine signaling pathway, Focal adhesion, Leukocyte transendothelial migration, Pathogenic Escherichia coli infection, Regulation of actin cytoskeleton, TGF-beta signaling pathway, Vascular smooth muscle contraction, Wnt signaling pathway



[View online »](#)

Product images:



Western Blot analysis of various cell lysates

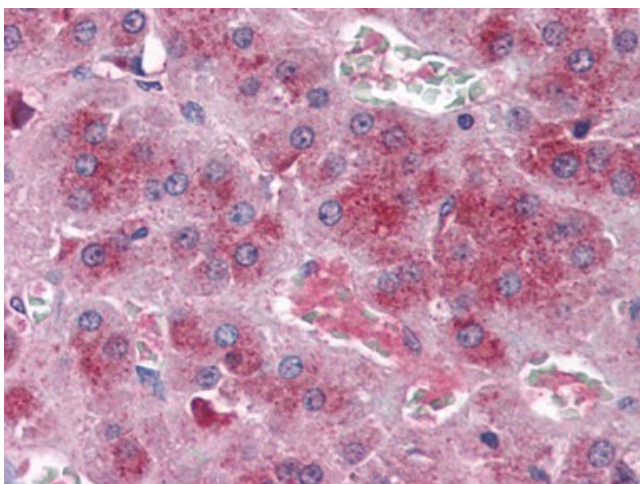
Immunoblot Analysis of cell lysates

Lane 1 : HepG2 cell lysate

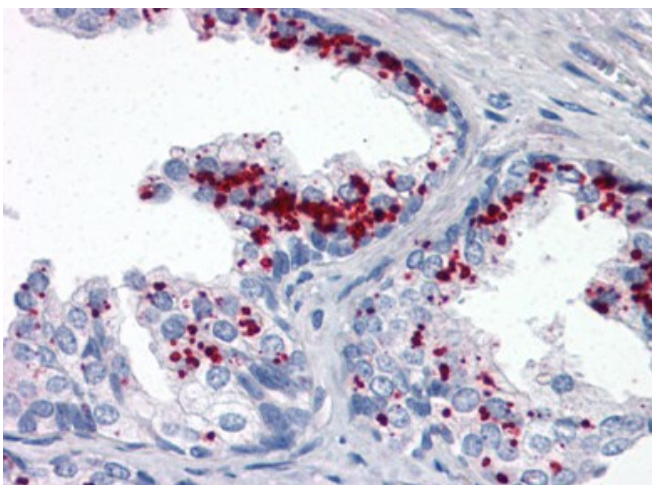
Lane 2 : HeLa cell lysate

Lane 3 : 293T cell lysate

Lane 4 : A431 cell lysate



Human Adrenal (formalin-fixed, paraffin-embedded) stained with ROCK2 antibody AP22644PU-N at 1/100 followed by biotinylated goat anti-rabbit IgG secondary antibody, alkaline phosphatase-streptavidin and chromogen.



Human Prostate (formalin-fixed, paraffin-embedded) stained with ROCK2 antibody AP22644PU-N at 1/100 followed by biotinylated goat anti-rabbit IgG secondary antibody, alkaline phosphatase-streptavidin and chromogen.