

Product datasheet for **AP22641PU-N**

Syntaxin 2 (STX2) (1-19) Rabbit Polyclonal Antibody

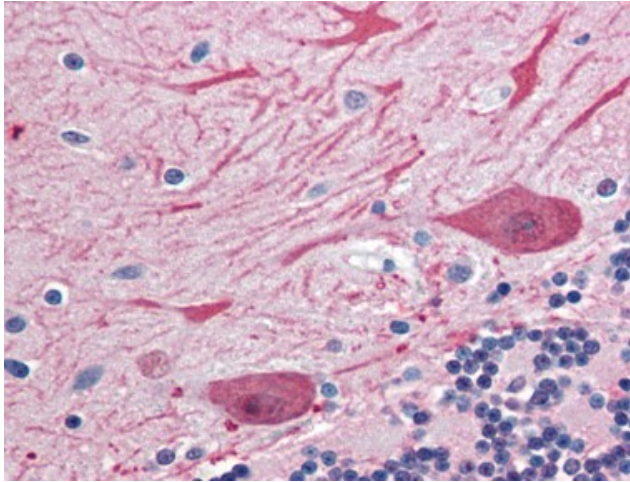
Product data:

Product Type:	Primary Antibodies
Applications:	IHC, IP, WB
Recommended Dilution:	Immunohistochemistry on Paraffin Sections: 10 µg/ml. Immunoprecipitation: 10 µg/ml. Western Blot: 1 µg/ml.
Reactivity:	Bovine, Chicken, Drosophila, Hamster, Human, Insect, Monkey, Mouse, Porcine, Rabbit, Rat, Sheep, Xenopus
Host:	Rabbit
Clonality:	Polyclonal
Immunogen:	STX2 antibody was raised against rat syntaxin 2 synthetic peptide, corresponding to amino acid residues 1-19, conjugated to KLH.
Specificity:	This antibody reacts to Epimorphin (STX2) at aa 1-19.
Formulation:	PBS, pH 7.2, 0.09% azide 50% glycerol State: Aff - Purified State: Liquid purified Ig fraction
Concentration:	lot specific
Purification:	Immunoaffinity Chromatography
Conjugation:	Unconjugated
Storage:	Store the antibody undiluted at 2-8°C for one month or (in aliquots) at -20°C for longer. Avoid repeated freezing and thawing.
Stability:	Shelf life: one year from despatch.
Gene Name:	syntaxin 2
Database Link:	Entrez Gene 13852 Mouse Entrez Gene 25130 Rat Entrez Gene 2054 Human P32856



[View online »](#)

Background:	The product of this gene belongs to the syntaxin/epimorphin family of proteins. The syntaxins are a large protein family implicated in the targeting and fusion of intracellular transport vesicles. The product of this gene regulates epithelial-mesenchymal interactions and epithelial cell morphogenesis and activation. Alternatively spliced transcript variants encoding different isoforms have been identified.
Synonyms:	Syntaxin-2, Epimorphin, EPIM, STX2A, STX2B, STX2C
Protein Families:	Druggable Genome, Transmembrane
Protein Pathways:	SNARE interactions in vesicular transport

Product images:

Human Brain, Cerebellum (formalin-fixed, paraffin-embedded) stained with STX2 antibody at 10 ug/ml followed by biotinylated goat anti-rabbit IgG secondary antibody, alkaline phosphatase-streptavidin and chromogen.