

Product datasheet for **AP22639PU-N**

Lamin A (LMNA) (N-term) Rabbit Polyclonal Antibody

Product data:

Product Type:	Primary Antibodies
Applications:	IF, IHC, WB
Recommended Dilution:	IF IHC IHC-Fr IHC-P (1:50) WB
Reactivity:	Human, Mouse, Rat
Host:	Rabbit
Clonality:	Polyclonal
Immunogen:	A peptide made from the last 8 amino acids of Lamin C, including an N-Terminus lysine as a linker (KHHVSGSRR), coupled to KLH
Specificity:	This antibody reacts strongly in immunoblotting with fragments corresponding to peptide 319-572aa of Lamin C. When tested against nuclear protein extracts from HeLa cells it reacts with a single band migrating at 65 kD. Stains Lamin C from human, mouse and rat material
Formulation:	PBS, 0.1% Sodium Azide
Concentration:	lot specific
Purification:	Affinity purified
Conjugation:	Unconjugated
Storage:	Short term: store at 4°C. Long term: store at -20°C. Avoid freeze-thaw cycles.
Stability:	12 months from date of despatch
Gene Name:	lamin A/C
Database Link:	Entrez Gene 16905 Mouse Entrez Gene 60374 Rat Entrez Gene 4000 Human P02545
Background:	Lamin C antibody LS-B2972 is an unconjugated rabbit polyclonal antibody to Lamin C (N-Terminus) from human. It is reactive with human, mouse and rat. Validated for IF, IHC and WB. Tested on 20 paraffin-embedded human tissues. Cited in 2 publications.



[View online »](#)

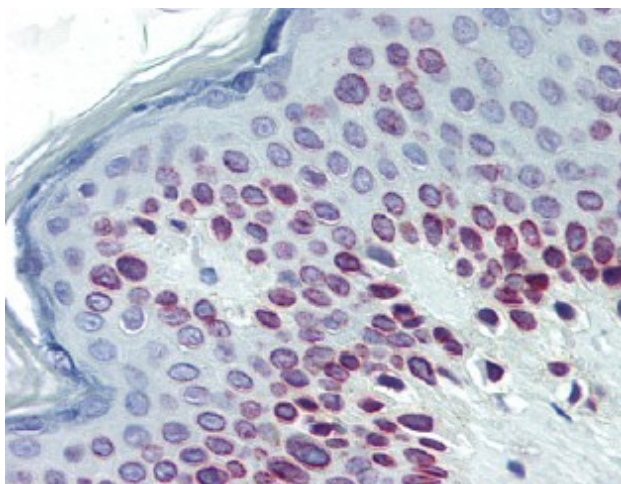
Synonyms: CDCD1; CDDC; CMD1A; CMT2B1; EMD2; FPL; FPLD; HGPS; IDC; LDP1; LFP; LGMD1B; LMN1; LMNC; OTTHUMP00000015843; PRO1

Note: Immunohistochemistry: LS-B2972 was validated for use in immunohistochemistry on a panel of 21 formalin-fixed, paraffin-embedded (FFPE) human tissues after heat induced antigen retrieval in pH 6.0 citrate buffer. After incubation with the primary antibody, slides were incubated with biotinylated secondary antibody, followed by alkaline phosphatase-streptavidin and chromogen. The stained slides were evaluated by a pathologist to confirm staining specificity. The optimal working concentration for LS-B2972 was determined to be 1:50.

Protein Families: Druggable Genome

Protein Pathways: Arrhythmogenic right ventricular cardiomyopathy (ARVC), Dilated cardiomyopathy, Hypertrophic cardiomyopathy (HCM)

Product images:



IHC Image for AP22639PU-N Human Skin (formalin-fixed, paraffin-embedded) stained with Lamin C antibody AP22639PU-N at 1/50 followed by biotinylated goat anti-rabbit IgG secondary antibody LS-D1, alkaline phosphatase-streptavidin and chromogen.