

## Product datasheet for **AP22638PU-N**

### gamma Synuclein (SNCG) Rabbit Polyclonal Antibody

#### Product data:

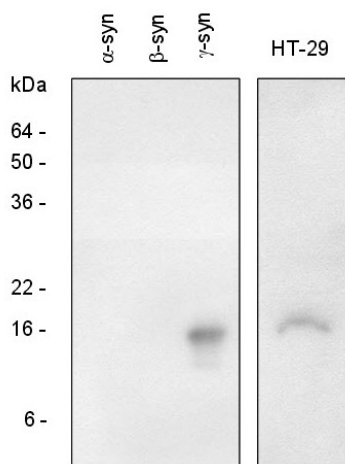
Product Type:	Primary Antibodies
Applications:	ELISA, IHC, WB
Recommended Dilution:	<b>ELISA.</b> <b>Immunohistochemistry on Paraffin Sections:</b> 5 µg/ml. <b>Western Blot:</b> 1/500 - 1/2000.
Reactivity:	Human
Host:	Rabbit
Clonality:	Polyclonal
Immunogen:	SNCG antibody was raised against recombinant human gamma-Synuclein purified from E. coli.
Specificity:	This antibody is specific for gamma-synuclein and does not cross-react with alpha- and beta-synuclein.
Formulation:	PBS, pH 7.4 containing 0.09% sodium azide State: Purified State: Liquid purified Ig fraction
Concentration:	lot specific
Purification:	Protein A Chromatography
Conjugation:	Unconjugated
Storage:	Store the antibody undiluted at 2-8°C for one month or (in aliquots) at -20°C for longer. Avoid repeated freezing and thawing.
Stability:	Shelf life: one year from despatch.
Gene Name:	synuclein gamma
Database Link:	<a href="#">Entrez Gene 6623 Human O76070</a>
Background:	Synuclein-gamma is a member of the synuclein family of proteins which are believed to be involved in the pathogenesis of neurodegenerative diseases. High levels of SNCG have been identified in advanced breast carcinomas suggesting a correlation between overexpression of SNCG and breast tumor development.



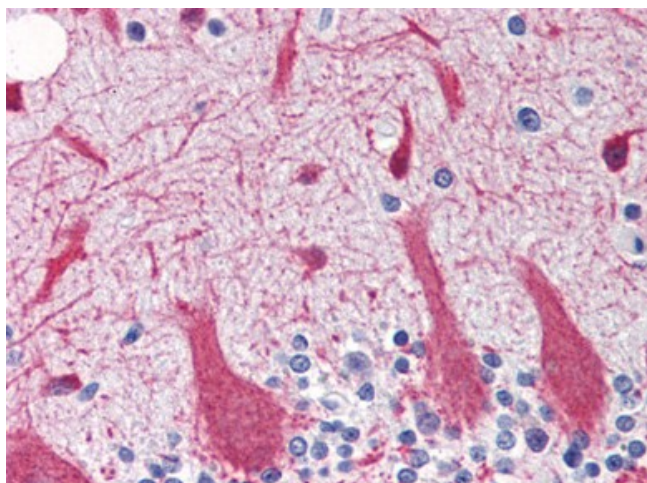
[View online »](#)

**Synonyms:** PERSYN, Synuclein gamma, Synoretin, BCSG1, PRSN

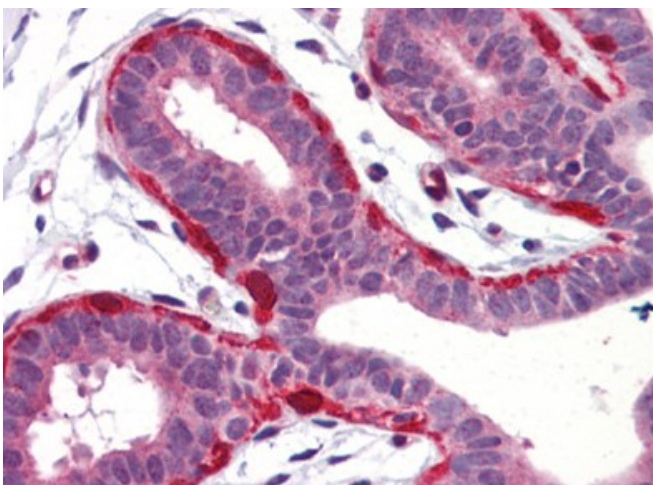
**Product images:**



The recombinant synuclein family (alpha-, beta- and gamma-) and the extracts of HT-29 (colon adenocarcinoma) cells were resolved by SDS-PAGE, transferred to PVDF membrane and probed with polyclonal anti-human gamma-synuclein (AP22638PU-N, 1/1000). Proteins were visualized using a goat anti-rabbit secondary antibody conjugated to HRP and the ECL detection system.



Human Brain, Cerebellum (formalin-fixed, paraffin-embedded) stained with SNCG antibody AP22638PU-N at 5 ug/ml followed by biotinylated goat anti-rabbit IgG secondary antibody, alkaline phosphatase-streptavidin and chromogen.



Human Breast (formalin-fixed, paraffin-embedded) stained with SNCG antibody AP22638PU-N at 5 ug/ml followed by biotinylated goat anti-rabbit IgG secondary antibody, alkaline phosphatase-streptavidin and chromogen.