

Product datasheet for **AP22631PU-N**

Calcium Sensing Receptor (CASR) (N-term) Rabbit Polyclonal Antibody

Product data:

Product Type:	Primary Antibodies
Applications:	IHC, WB
Recommended Dilution:	Immunohistochemistry on Paraffin Sections: 15 µg/ml. Western Blot: 1 - 2 µg/ml.
Reactivity:	Human, Rat
Host:	Rabbit
Clonality:	Polyclonal
Immunogen:	CASR antibody was raised against a synthetic peptide from N-terminal of rat calcium sensing receptor
Specificity:	This antibody reacts to Calcium-Sensing Receptor CASR (CASR).
Formulation:	10 mM PBS, pH 7.4 containing BSA, sodium azide. State: Purified State: Liquid purified Ig fraction
Purification:	Immunoaffinity Chromatography
Conjugation:	Unconjugated
Storage:	Store the antibody undiluted at 2-8°C for one month or (in aliquots) at -20°C for longer. Avoid repeated freezing and thawing.
Stability:	Shelf life: one year from despatch.
Gene Name:	calcium sensing receptor
Database Link:	Entrez Gene 24247 Rat Entrez Gene 846 Human P41180



[View online »](#)

Background:

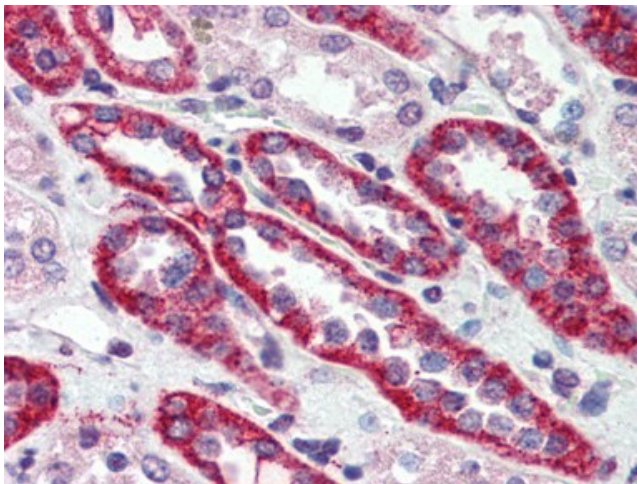
CASR, a Calcium-Sensing Receptor, functions as a sensor in parathyroid and kidney to determine extracellular calcium concentration and to maintain calcium homeostasis. This receptor regulates both secretion of parathyroid hormone and excretion of urinary calcium. Mutations that inactivate CASR cause familial hypocalciuric hypercalcemia, which is also correlated with hyperparathyroidism. On the other hand, mutations that activate CASR cause autosomal dominant hypocalcemia. Hjalms et al. (2001) and Awata et al. (2001) have identified the binding of filamin-1 to the C-terminal tail of CASR, which may contribute to its localization in caveolae, link it to the actin-based cytoskeleton, and participate in CASR-mediated activation of MAPK. Multiple isoforms for CASR are produced by alternative splicing.

Synonyms:

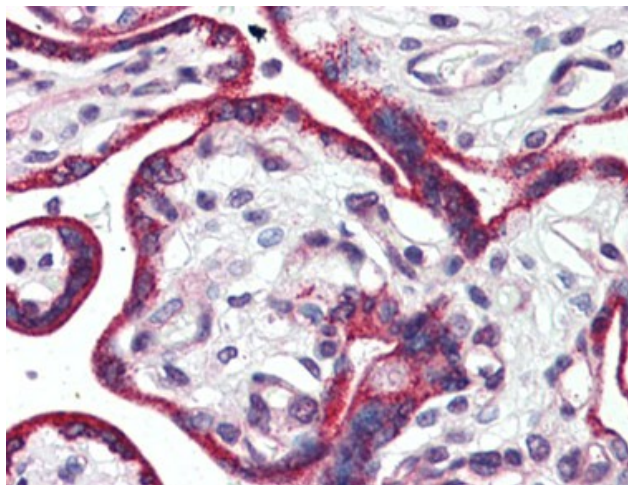
Extracellular calcium-sensing receptor, GPRC2A, PCAR1

Protein Families:

Druggable Genome, GPCR, Transmembrane

Product images:

Human Kidney (formalin-fixed, paraffin-embedded) stained with CASR antibody AP22631PU-N at 15 ug/ml followed by biotinylated goat anti-rabbit IgG secondary antibody, alkaline phosphatase-streptavidin and chromogen.



Human Placenta (formalin-fixed, paraffin-embedded) stained with CASR antibody AP22631PU-N at 15 ug/ml followed by biotinylated goat anti-rabbit IgG secondary antibody, alkaline phosphatase-streptavidin and chromogen.