

Product datasheet for **AP22629SU-N**

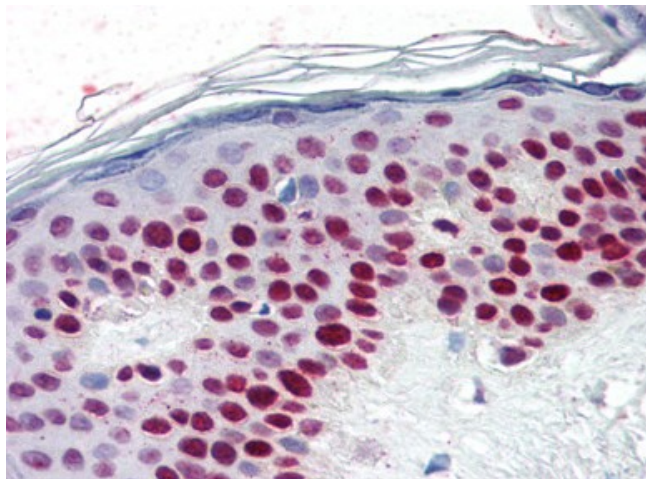
RCC1 Rabbit Polyclonal Antibody

Product data:

Product Type:	Primary Antibodies
Applications:	IF, IHC, IP, WB
Recommended Dilution:	Immunofluorescence. Immunohistochemistry on Paraffin Sections: 1/100. Immunoprecipitation. Western Blot: 1/500.
Reactivity:	Human
Host:	Rabbit
Clonality:	Polyclonal
Immunogen:	RCC1 antibody was raised against his-tagged recombinant Xenopus RCC1 protein purified from E. coli
Specificity:	This antibody reacts to Regulator Of Chromosome Condensation (RCC1).
Formulation:	PBS containing 0.09% sodium azide. State: Serum State: Liquid serum
Conjugation:	Unconjugated
Storage:	Store the antibody undiluted at 2-8°C for one month or (in aliquots) at -20°C for longer. Avoid repeated freezing and thawing.
Stability:	Shelf life: one year from despatch.
Gene Name:	regulator of chromosome condensation 1
Database Link:	Entrez Gene 1104 Human P18754
Synonyms:	RCC1-I



[View online »](#)

Product images:

Human Skin (formalin-fixed, paraffin-embedded) stained with RCC1 antibody AP22629SU-N at 1/100 followed by biotinylated goat anti-rabbit IgG secondary antibody, alkaline phosphatase-streptavidin and chromogen.