

Product datasheet for **AP22616PU-N**

GPAM (C-term) Rabbit Polyclonal Antibody

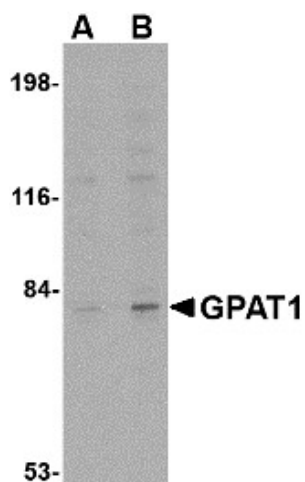
Product data:

Product Type:	Primary Antibodies
Applications:	ELISA, IHC, WB
Recommended Dilution:	ELISA. Immunohistochemistry on Paraffin Sections: 5 µg/ml. Western Blot: 1 - 2 µg/ml.
Reactivity:	Human, Mouse, Rat
Host:	Rabbit
Clonality:	Polyclonal
Immunogen:	GPAM antibody was raised against 15 amino acid peptide near the carboxy terminus of the human GPAT1
Specificity:	This antibody reacts to Glycerol-3-phosphate acyltransferase, mitochondrial (GPAM).
Formulation:	PBS containing 0.02% sodium azide. State: Purified State: Liquid purified Ig fraction
Concentration:	lot specific
Purification:	Immunoaffinity Chromatography
Conjugation:	Unconjugated
Storage:	Store the antibody undiluted at 2-8°C for one month or (in aliquots) at -20°C for longer. Avoid repeated freezing and thawing.
Stability:	Shelf life: one year from despatch.
Gene Name:	glycerol-3-phosphate acyltransferase, mitochondrial
Database Link:	Entrez Gene 14732 Mouse Entrez Gene 29653 Rat Entrez Gene 57678 Human Q9HCL2
Synonyms:	Glycerol-3-phosphate acyltransferase 1, KIAA1560
Protein Pathways:	Glycerolipid metabolism, Glycerophospholipid metabolism, Metabolic pathways

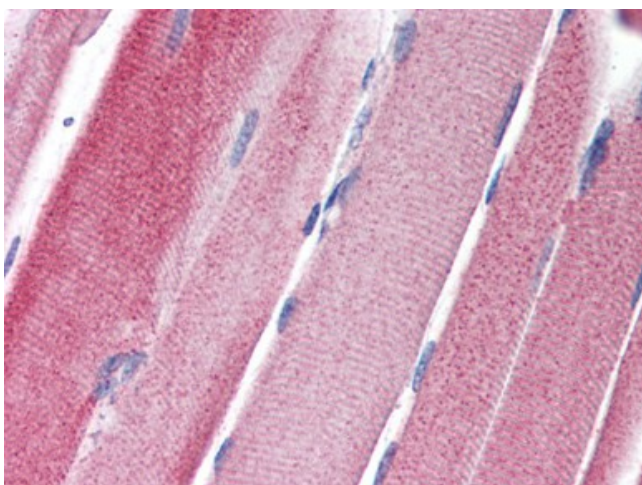


[View online »](#)

Product images:



Western blot analysis of GPAT1 in rat brain tissue lysate with GPAT1 antibody at (A) 1 and (B) 2 ug/ml.



Human Skeletal Muscle (formalin-fixed, paraffin-embedded) stained with GPAM antibody at 5 ug/ml followed by biotinylated goat anti-rabbit IgG secondary antibody, alkaline phosphatase-streptavidin and chromogen.