

Product datasheet for **AP22614PU-N**

HES7 Rabbit Polyclonal Antibody

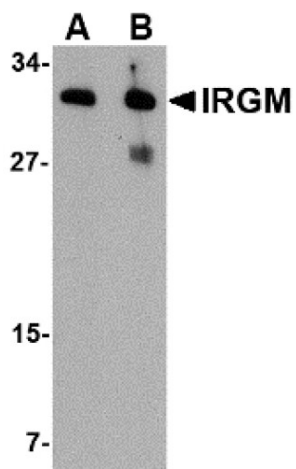
Product data:

Product Type:	Primary Antibodies
Applications:	ELISA, IHC, WB
Recommended Dilution:	ELISA. Immunohistochemistry on Paraffin Sections: 5 µg/ml. Western Blot: 1 - 2 µg/ml.
Reactivity:	Human, Mouse, Rat
Host:	Rabbit
Clonality:	Polyclonal
Immunogen:	IRGM antibody was raised against 14 amino acid peptide near the center of the human IRGM
Specificity:	This antibody reacts to Immunity-related GTPase Family, M (IRGM).
Formulation:	PBS containing 0.02% sodium azide as preservative State: Aff - Purified State: Liquid purified Ig fraction
Concentration:	lot specific
Purification:	Immunoaffinity Chromatography
Conjugation:	Unconjugated
Storage:	Store the antibody undiluted at 2-8°C for one month or (in aliquots) at -20°C for longer. Avoid repeated freezing and thawing.
Stability:	Shelf life: one year from despatch.
Gene Name:	hes family bHLH transcription factor 7
Database Link:	Entrez Gene 84667 Human Q9BYE0
Synonyms:	IFI1, IRGM1, LRG47

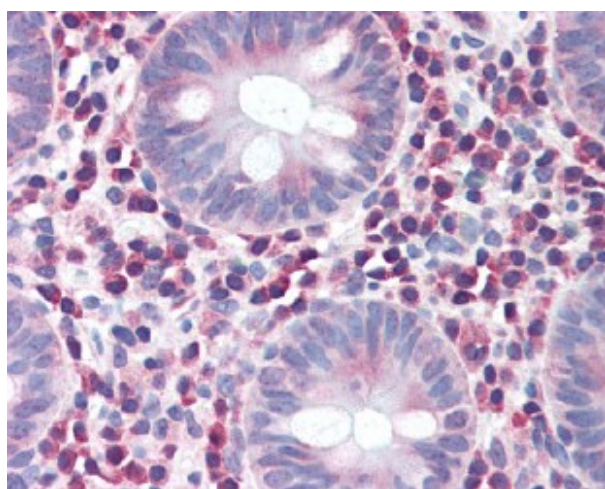


[View online »](#)

Product images:



WB Image for Western blot analysis of IRGM in human brain lysate with IRGM antibody at (A) 1 and (B) 2 ug/ml.



IHC Image for Human Colon (formalin-fixed, paraffin-embedded) stained with IRGM antibody at 5 ug/ml followed by biotinylated goat anti-rabbit IgG secondary antibody LS-D1, alkaline phosphatase-streptavidin and chromogen.