

Product datasheet for **AP22612PU-N**

DHX58 Rabbit Polyclonal Antibody

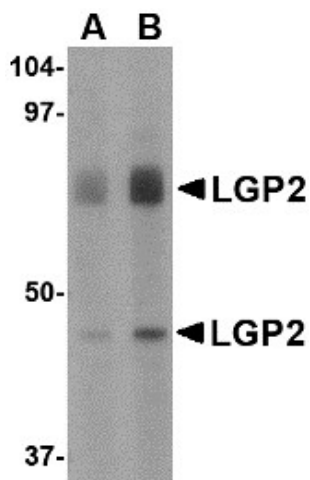
Product data:

Product Type:	Primary Antibodies
Applications:	ELISA, IHC, WB
Recommended Dilution:	ELISA. Immunohistochemistry on Paraffin Sections: 5 µg/ml. Western Blot: 1 - 2 µg/ml.
Reactivity:	Human, Mouse, Rat
Host:	Rabbit
Clonality:	Polyclonal
Immunogen:	DHX58 antibody was raised against 11 amino acid peptide from near the center of human LGP2
Specificity:	This antibody reacts to DEXH (Asp-Glu-X-His) Box Polypeptide 58 (DHX58).
Formulation:	PBS containing 0.02% Sodium Azide as preservative. State: Purified State: Liquid purified Ig fraction
Concentration:	lot specific
Purification:	Immunoaffinity Chromatography
Conjugation:	Unconjugated
Storage:	Store the antibody undiluted at 2-8°C for one month or (in aliquots) at -20°C for longer. Avoid repeated freezing and thawing.
Stability:	Shelf life: one year from despatch.
Gene Name:	DEXH-box helicase 58
Database Link:	Entrez Gene 80861 Mouse Entrez Gene 303538 Rat Entrez Gene 79132 Human Q96C10
Synonyms:	DHX58, D11LGP2E, LGP2, ATP-dependent RNA helicase DHX58, ATP-dependent helicase LGP2, Protein D11Lgp2 homolog
Protein Pathways:	RIG-I-like receptor signaling pathway

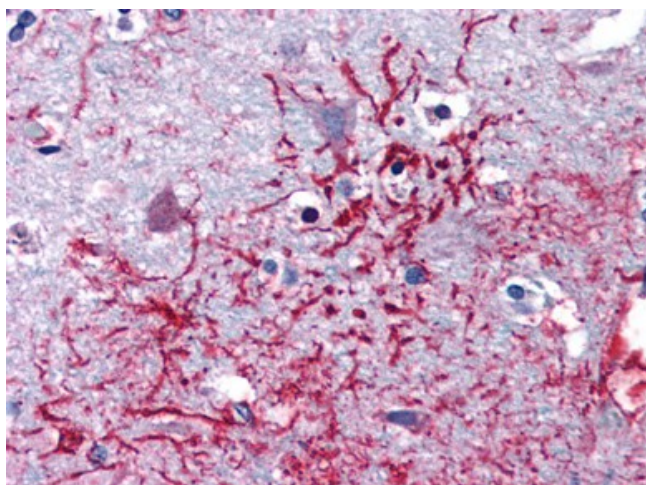


[View online »](#)

Product images:



Western blot analysis of LGP2 in rat kidney tissue lysate with LGP2 antibody (AP22612PU-N) at (A) 1 and (B) 2 ug/ml.



Human Brain, Cortex (formalin-fixed, paraffin-embedded) stained with DHX58 antibody AP22612PU-N at 5 ug/ml followed by biotinylated goat anti-rabbit IgG secondary antibody, alkaline phosphatase-streptavidin and chromogen.