

## Product datasheet for **AP22611PU-N**

### ATG16L1 Rabbit Polyclonal Antibody

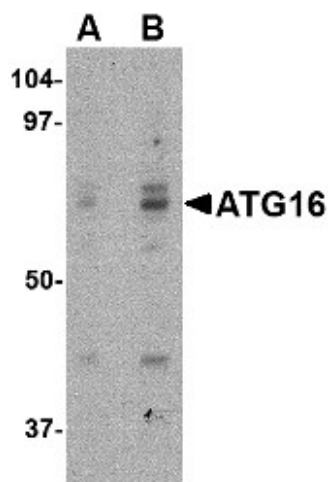
#### Product data:

Product Type:	Primary Antibodies
Applications:	ELISA, IHC, WB
Recommended Dilution:	<b>ELISA.</b> <b>Immunohistochemistry on Paraffin Sections:</b> 5 µg/ml. <b>Western Blot:</b> 0.25 - 0.5 µg/ml.
Reactivity:	Human, Mouse, Rat
Host:	Rabbit
Clonality:	Polyclonal
Immunogen:	ATG16L1 antibody was raised against 18 amino acid peptide from near the center of human ATG16
Specificity:	This antibody reacts to ATG16 Autophagy Related 16 Like 1 (ATG16L1).
Formulation:	PBS containing 0.02% sodium azide. State: Purified State: Liquid purified Ig fraction
Concentration:	lot specific
Purification:	Immunoaffinity Chromatography
Conjugation:	Unconjugated
Storage:	Store the antibody undiluted at 2-8°C for one month or (in aliquots) at -20°C for longer. Avoid repeated freezing and thawing.
Stability:	Shelf life: one year from despatch.
Gene Name:	autophagy related 16 like 1
Database Link:	<a href="#">Entrez Gene 77040 Mouse</a> <a href="#">Entrez Gene 363278 Rat</a> <a href="#">Entrez Gene 55054 Human Q676U5</a>
Synonyms:	Autophagy-related protein 16-1, APG16-like 1

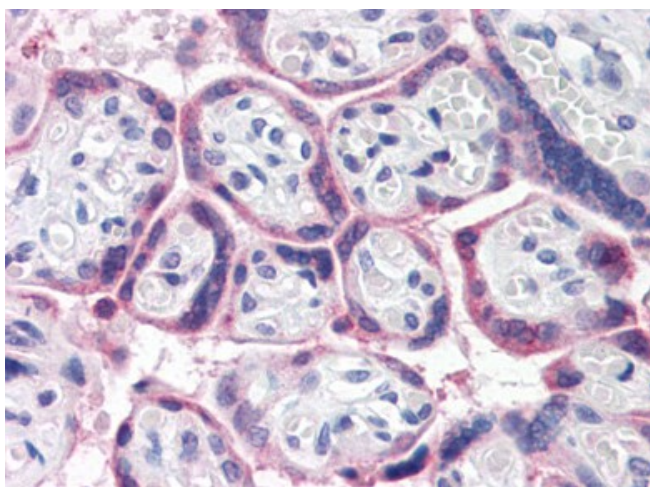


[View online »](#)

## Product images:



Western blot analysis of ATG16 in HeLa cell lysate with ATG16 antibody (AP22611PU-N) at (A) 0.25 and (B) 0.5 mg/ml.



Human Placenta (formalin-fixed, paraffin-embedded) stained with ATG16L1 antibody AP22611PU-N at 5 ug/ml followed by biotinylated goat anti-rabbit IgG secondary antibody, alkaline phosphatase-streptavidin and chromogen.