

## Product datasheet for **AP22609PU-N**

### TEM1 (CD248) (C-term) Rabbit Polyclonal Antibody

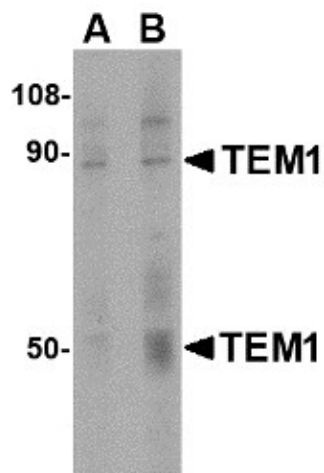
#### Product data:

Product Type:	Primary Antibodies
Applications:	ELISA, IHC, WB
Recommended Dilution:	<b>ELISA.</b> <b>Immunohistochemistry on Paraffin Sections:</b> 5 µg/ml. <b>Western Blot:</b> 0.5 - 1 µg/ml.
Reactivity:	Human, Mouse, Rat
Host:	Rabbit
Clonality:	Polyclonal
Immunogen:	CD248 antibody was raised against 14 amino acid peptide near the carboxy terminus of the human TEM1
Specificity:	This antibody reacts to Tumor Endothelial Marker 1 Precursor (TEM1) (CD248).
Formulation:	PBS containing 0.02% sodium azide. State: Purified State: Liquid purified Ig fraction
Concentration:	lot specific
Purification:	Immunoaffinity Chromatography
Conjugation:	Unconjugated
Storage:	Store the antibody undiluted at 2-8°C for one month or (in aliquots) at -20°C for longer. Avoid repeated freezing and thawing.
Stability:	Shelf life: one year from despatch.
Gene Name:	CD248 molecule
Database Link:	<a href="#">Entrez Gene 70445 Mouse</a> <a href="#">Entrez Gene 293669 Rat</a> <a href="#">Entrez Gene 57124 Human</a> <a href="#">Q9HCU0</a>
Synonyms:	CD164L1, Endosialin
Protein Families:	Druggable Genome, Transmembrane

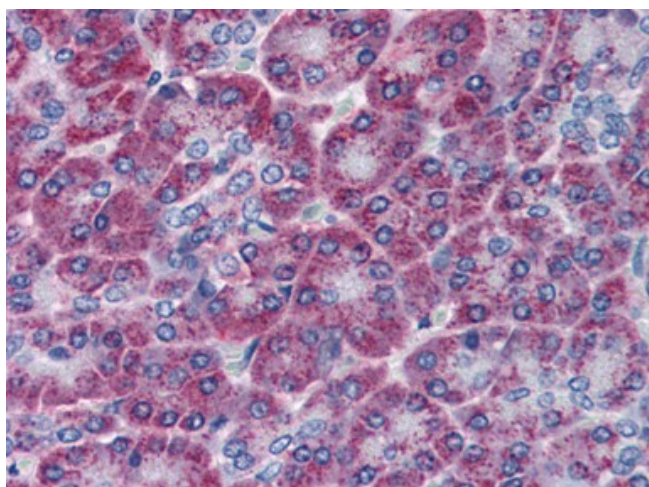


[View online »](#)

## Product images:



Western blot analysis of TEM1 in human colon tissue lysate with TEM1 antibody at (A) 0.5 and (B) 1 ug/ml.



Human Pancreas (formalin-fixed, paraffin-embedded) stained with CD248 antibody at 5 ug/ml followed by biotinylated goat anti-rabbit IgG secondary antibody, alkaline phosphatase-streptavidin and chromogen.