

## Product datasheet for **AP22607PU-N**

### ELOVL6 (N-term) Rabbit Polyclonal Antibody

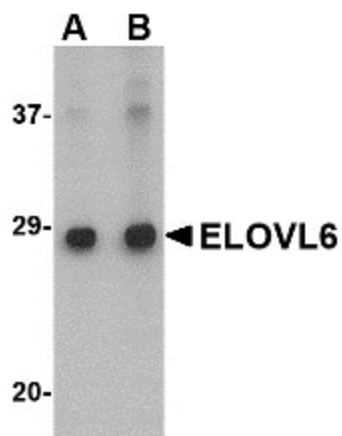
#### Product data:

Product Type:	Primary Antibodies
Applications:	ELISA, IHC, WB
Recommended Dilution:	<b>ELISA.</b> <b>Immunohistochemistry on Paraffin Sections:</b> 5 µg/ml. <b>Western Blot:</b> 1 - 2 µg/ml.
Reactivity:	Human, Mouse, Rat
Host:	Rabbit
Clonality:	Polyclonal
Immunogen:	ELOVL6 antibody was raised against 16 amino acid peptide near the amino terminus of the human ELOVL6
Specificity:	This antibody reacts to ELOVL Family Member 6 (ELOVL6).
Formulation:	PBS containing 0.02% sodium azide. State: Purified State: Liquid purified Ig fraction
Concentration:	lot specific
Purification:	Immunoaffinity Chromatography
Conjugation:	Unconjugated
Storage:	Store the antibody undiluted at 2-8°C for one month or (in aliquots) at -20°C for longer. Avoid repeated freezing and thawing.
Stability:	Shelf life: one year from despatch.
Gene Name:	ELOVL fatty acid elongase 6
Database Link:	<a href="#">Entrez Gene 170439 Mouse</a> <a href="#">Entrez Gene 171402 Rat</a> <a href="#">Entrez Gene 79071 Human</a> <a href="#">Q9H5J4</a>
Synonyms:	hELO2, Fatty acyl-CoA elongase, Long-chain fatty-acyl elongase, FACE, LCE
Protein Families:	Transmembrane
Protein Pathways:	Biosynthesis of unsaturated fatty acids

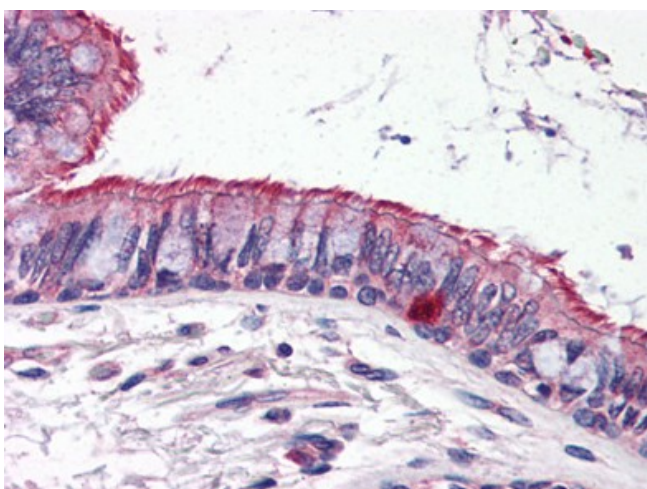


[View online »](#)

## Product images:



Western blot analysis of ELOVL6 in Human brain tissue lysate with ELOVL6 antibody (AP22607PU-N) at (A) 1 and (B) 2 ug/ml.



Human Lung (formalin-fixed, paraffin-embedded) stained with ELOVL6 antibody AP22607PU-N at 5 ug/ml followed by biotinylated goat anti-rabbit IgG secondary antibody, alkaline phosphatase-streptavidin and chromogen.