

Product datasheet for **AP22606PU-N**

FEZ2 (C-term) Rabbit Polyclonal Antibody

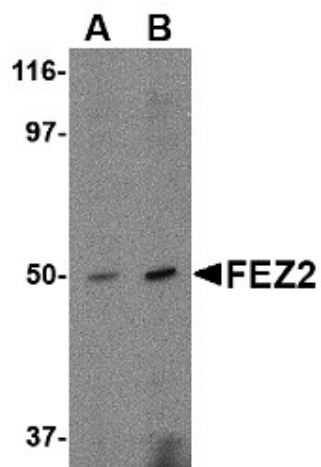
Product data:

Product Type:	Primary Antibodies
Applications:	ELISA, IHC, WB
Recommended Dilution:	ELISA. Immunohistochemistry on Paraffin Sections: 3 µg/ml. Western Blot: 0.5 - 1 µg/ml.
Reactivity:	Human, Mouse, Rat
Host:	Rabbit
Clonality:	Polyclonal
Immunogen:	FEZ2 antibody was raised against 15 amino acid peptide from near the carboxy terminus of human FEZ2
Specificity:	This antibody reacts to ZyginII (FEZ2).
Formulation:	PBS containing 0.02% sodium azide. State: Purified State: Liquid purified Ig fraction
Concentration:	lot specific
Purification:	Immunoaffinity Chromatography
Conjugation:	Unconjugated
Storage:	Store the antibody undiluted at 2-8°C for one month or (in aliquots) at -20°C for longer. Avoid repeated freezing and thawing.
Stability:	Shelf life: one year from despatch.
Gene Name:	fasciculation and elongation protein zeta 2
Database Link:	Entrez Gene 94269 Rat Entrez Gene 225020 Mouse Entrez Gene 9637 Human Q9UHY8
Synonyms:	Zygin II, FEZ2

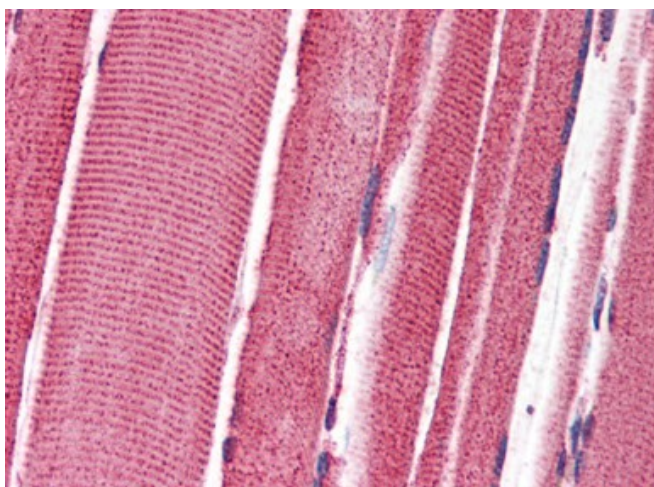


[View online »](#)

Product images:



Western blot analysis of FEZ2 in mouse brain tissue lysate with FEZ2 antibody at (A) 0.5, and (B) 1 ug/ml.



Human Skeletal Muscle (formalin-fixed, paraffin-embedded) stained with FEZ2 antibody at 3 ug/ml followed by biotinylated goat anti-rabbit IgG secondary antibody, alkaline phosphatase-streptavidin and chromogen.