

Product datasheet for **AP22604PU-N**

TMC6 (N-term) Rabbit Polyclonal Antibody

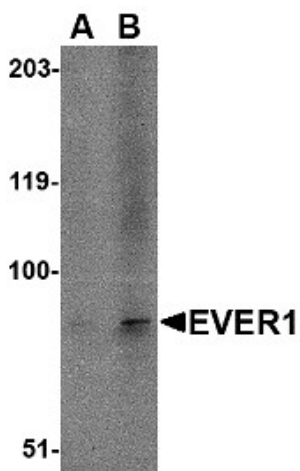
Product data:

Product Type:	Primary Antibodies
Applications:	ELISA, IHC, WB
Recommended Dilution:	ELISA. Immunohistochemistry on Paraffin Sections: 5 µg/ml. Western Blot: 1 - 2 µg/ml.
Reactivity:	Human, Mouse, Rat
Host:	Rabbit
Clonality:	Polyclonal
Immunogen:	TMC6 antibody was raised against 14 amino acid peptide from near the amino terminus of human EVER1
Specificity:	This antibody reacts to Transmembrane Channel-Like 6 (TMC6).
Formulation:	PBS containing 0.02% sodium azide. State: Purified State: Liquid purified Ig fraction
Concentration:	lot specific
Purification:	Immunoaffinity Chromatography
Conjugation:	Unconjugated
Storage:	Store the antibody undiluted at 2-8°C for one month or (in aliquots) at -20°C for longer. Avoid repeated freezing and thawing.
Stability:	Shelf life: one year from despatch.
Gene Name:	transmembrane channel like 6
Database Link:	Entrez Gene 217353 Mouse Entrez Gene 688280 Rat Entrez Gene 11322 Human Q7Z403
Synonyms:	EVIN1, LAK-4
Protein Families:	Transmembrane

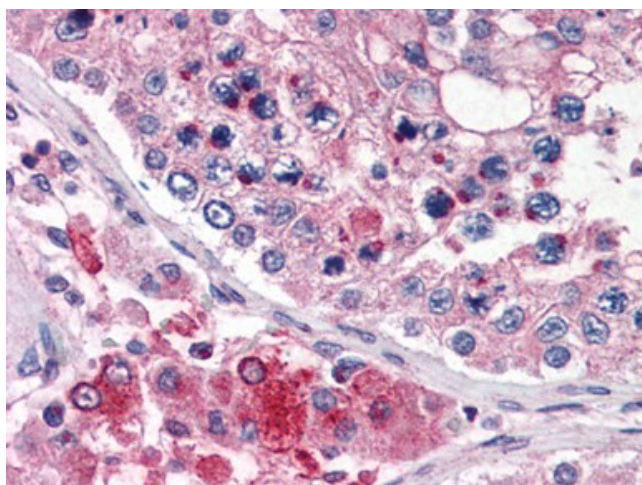


[View online »](#)

Product images:



Western blot analysis of EVER1 in A-20 cell lysate with EVER1 antibody (AP22604PU-N) at (A) 1 and (B) 2 mg/ml.



Human Testis (formalin-fixed, paraffin-embedded) stained with TMC6 antibody AP22604PU-N at 5 ug/ml followed by biotinylated goat anti-rabbit IgG secondary antibody, alkaline phosphatase-streptavidin and chromogen.