

Product datasheet for **AP22602PU-N**

NPTX2 Rabbit Polyclonal Antibody

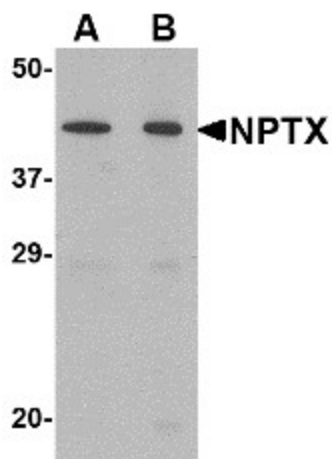
Product data:

Product Type:	Primary Antibodies
Applications:	ELISA, IHC, WB
Recommended Dilution:	ELISA. Immunohistochemistry on Paraffin Sections: 5 µg/ml. Western Blot: 1 - 2 µg/ml.
Reactivity:	Human, Mouse, Rat
Host:	Rabbit
Clonality:	Polyclonal
Immunogen:	NPTX2 antibody was raised against 16 amino acid peptide near the center of the human NPTX2
Specificity:	This antibody reacts to Neuronal Pentraxin II (NPTX2).
Formulation:	PBS containing 0.02% sodium azide. State: Purified State: Liquid purified Ig fraction
Concentration:	lot specific
Purification:	Immunoaffinity Chromatography
Conjugation:	Unconjugated
Storage:	Store the antibody undiluted at 2-8°C for one month or (in aliquots) at -20°C for longer. Avoid repeated freezing and thawing.
Stability:	Shelf life: one year from despatch.
Gene Name:	neuronal pentraxin 2
Database Link:	Entrez Gene 53324 Mouse Entrez Gene 288475 Rat Entrez Gene 4885 Human P47972
Synonyms:	NP2, NPTX2
Protein Families:	Secreted Protein

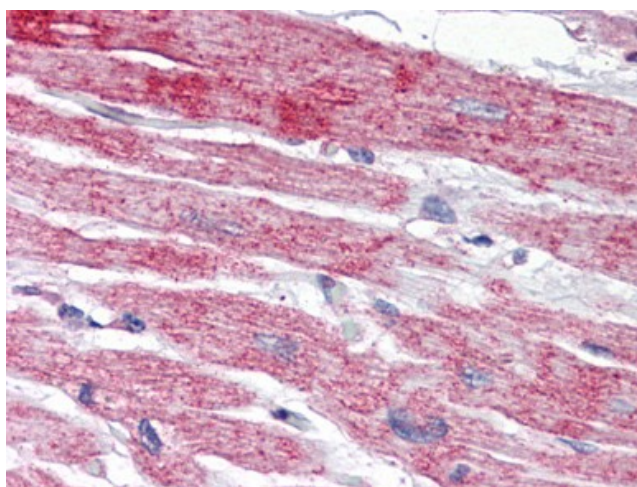


[View online »](#)

Product images:



Western blot analysis of NPTX2 in mouse brain tissue lysate with NPTX2 antibody (AP22602PU-N) at (A) 0.5 and (B) 1 ug/ml.



Human Heart (formalin-fixed, paraffin-embedded) stained with NPTX2 antibody AP22602PU-N at 5 ug/ml followed by biotinylated goat anti-rabbit IgG secondary antibody, alkaline phosphatase-streptavidin and chromogen.