

Product datasheet for **AP22599PU-N**

SATB1 (C-term) Rabbit Polyclonal Antibody

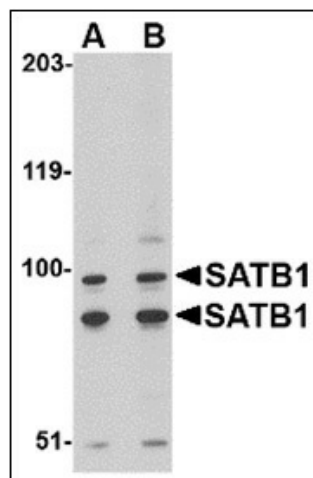
Product data:

Product Type:	Primary Antibodies
Applications:	ELISA, IHC, WB
Recommended Dilution:	ELISA. Immunohistochemistry on Paraffin Sections: 5 µg/ml. Western Blot: 2 - 4 µg/ml.
Reactivity:	Human, Mouse, Rat
Host:	Rabbit
Clonality:	Polyclonal
Immunogen:	SATB1 antibody was raised against 15 amino acid peptide near the carboxy terminus of the human SATB1
Specificity:	This antibody reacts to DNA-binding Protein Satb1 (SATB1).
Formulation:	PBS containing 0.02% sodium azide. State: Purified State: Liquid purified Ig fraction
Concentration:	lot specific
Purification:	Immunoaffinity Chromatography
Conjugation:	Unconjugated
Storage:	Store the antibody undiluted at 2-8°C for one month or (in aliquots) at -20°C for longer. Avoid repeated freezing and thawing.
Stability:	Shelf life: one year from despatch.
Gene Name:	SATB homeobox 1
Database Link:	Entrez Gene 20230 Mouse Entrez Gene 316164 Rat Entrez Gene 6304 Human Q01826
Synonyms:	SATB1
Protein Families:	Druggable Genome, Transcription Factors

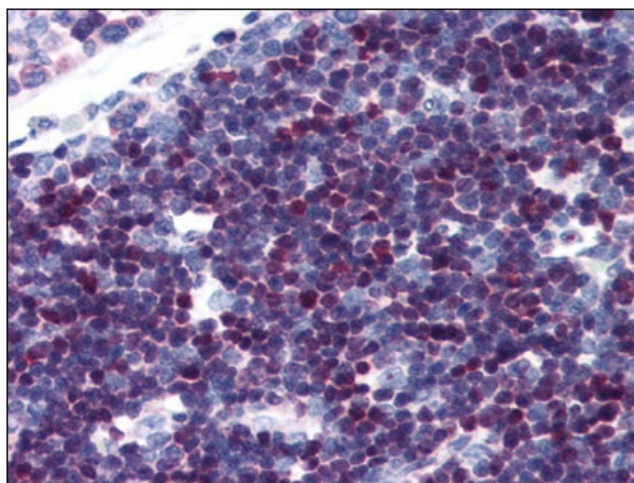


[View online »](#)

Product images:



Western blot analysis of SATB1 in A20 cell lysate with SATB1 antibody at (A) 2 and (B) 4 ug/ml.



Human Thymus (formalin-fixed, paraffin-embedded) stained with SATB1 antibody at 5 ug/ml followed by biotinylated goat anti-rabbit IgG secondary antibody, alkaline phosphatase-streptavidin and chromogen.