

## Product datasheet for **AP22588PU-N**

### Plin3 Goat Polyclonal Antibody

#### Product data:

Product Type:	Primary Antibodies
Applications:	ELISA, IHC, WB
Recommended Dilution:	<b>ELISA:</b> 1/16000. <b>Immunohistochemistry on Paraffin Sections:</b> 5 µg/ml. <b>Western Blot:</b> 1 - 3 µg/ml.
Reactivity:	Mouse, Rat
Host:	Goat
Clonality:	Polyclonal
Immunogen:	Synthetic peptide from an internal region of mouse M6PRBP1
Specificity:	This antibody reacts to Mannose-6-phosphate Receptor Binding Protein 1 (M6PRBP1).
Formulation:	Tris saline buffer, pH 7.3 containing 0.5% BSA as stabilizer and 0.02% sodium azide as preservative State: Purified State: Liquid purified Ig fraction
Concentration:	lot specific
Purification:	Immunoaffinity Chromatography
Conjugation:	Unconjugated
Storage:	Store the antibody at -20°C. Avoid repeated freezing and thawing.
Stability:	Shelf life: one year from despatch.
Gene Name:	perilipin 3
Database Link:	<a href="#">Entrez Gene 316130 Rat</a> <a href="#">Entrez Gene 66905 Mouse</a> <a href="#">Q9DBG5</a>



[View online »](#)

**Background:**

Mannose 6-phosphate receptors (MPRs) deliver lysosomal hydrolase from the Golgi to endosomes and then return to the Golgi complex. M6PRBP1 interacts with the cytoplasmic domains of both cation-independent and cation-dependent MPRs, and is required for endosome-to-Golgi transport. This protein also binds directly to the GTPase RAB9 (RAB9A), a member of the RAS oncogene family. The interaction with RAB9 has been shown to increase the affinity of this protein for its cargo.

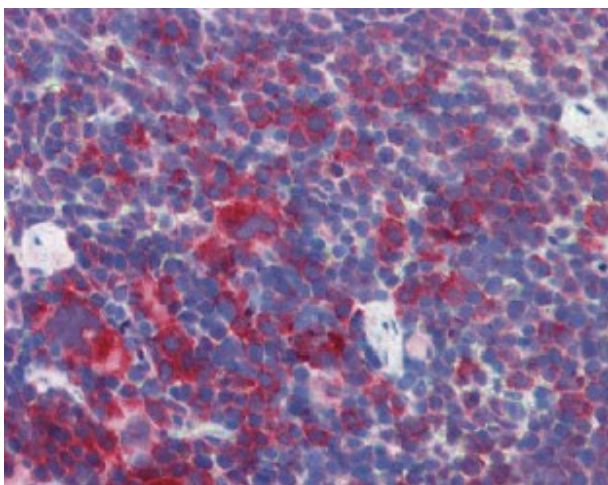
**Synonyms:**

M6PRBP1; PP17; TIP47

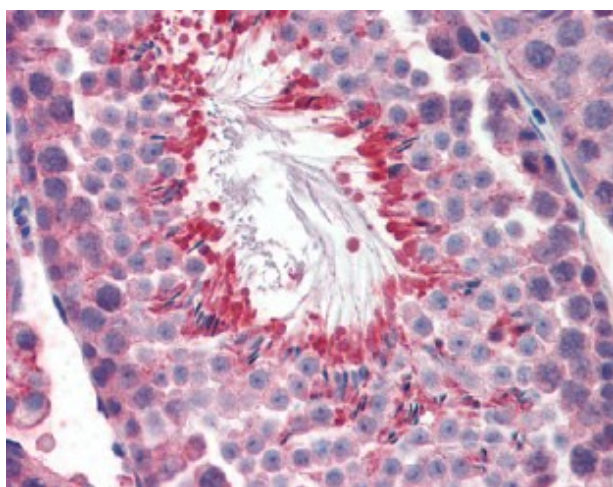
**Product images:**



WB Image for Antibody (0.1 ug/ml) staining of Rat Skin lysate (35 ug protein in RIPA buffer). Primary incubation was 1 hour. Detected by chemiluminescence.



IHC Image for Mouse Spleen (formalin-fixed, paraffin-embedded) stained with M6PRBP1 antibody followed by biotinylated anti-goat IgG secondary antibody LS-D3, alkaline phosphatase-streptavidin and chromogen.



IHC Image for Mouse Testis (formalin-fixed, paraffin-embedded) stained with M6PRBP1 antibody followed by biotinylated anti-goat IgG secondary antibody LS-D3, alkaline phosphatase-streptavidin and chromogen.