

## Product datasheet for **AP22587PU-N**

### CLIP170 (CLIP1) (1404-1417) Goat Polyclonal Antibody

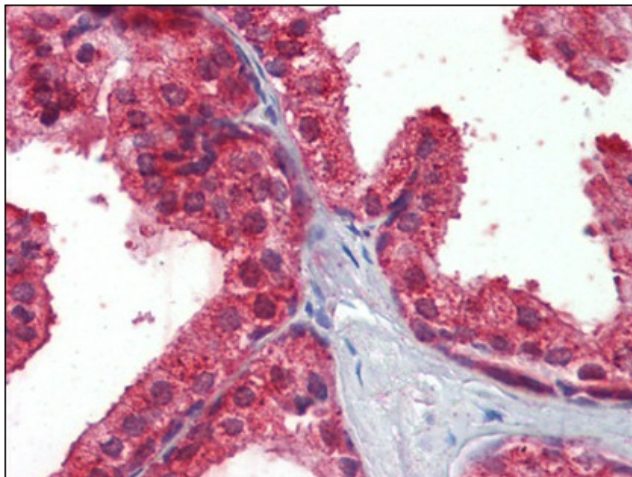
#### Product data:

Product Type:	Primary Antibodies
Applications:	ELISA, IHC, WB
Recommended Dilution:	<b>ELISA:</b> 1/8000, 1 - 3 µg/ml. <b>Immunohistochemistry on Paraffin Sections:</b> 2.5 µg/ml. <b>Western Blot:</b> 1 - 3 µg/ml.
Reactivity:	Canine, Human, Mouse, Porcine, Rat
Host:	Goat
Clonality:	Polyclonal
Immunogen:	Peptide from the C-term of the protein sequence according to NP_002947.1, NP_937883.1
Specificity:	This antibody detects CLIP1 / Restin (C-term).
Formulation:	Tris saline, pH7.3 containing 0.02% sodium azide as preservative and 0.5% bovine serum albumin as stabilizer State: Aff - Purified State: Liquid purified Ig fraction
Concentration:	lot specific
Purification:	Affinity Chromatography
Conjugation:	Unconjugated
Storage:	Store the antibody undiluted at 2-8°C for one month or (in aliquots) at -20°C for longer. Avoid repeated freezing and thawing.
Stability:	Shelf life: one year from despatch.
Gene Name:	CAP-Gly domain containing linker protein 1
Database Link:	<a href="#">Entrez Gene 56430 Mouse</a> <a href="#">Entrez Gene 65201 Rat</a> <a href="#">Entrez Gene 6249 Human</a> <a href="#">P30622</a>
Background:	Binds to the plus end of microtubules and regulates the dynamics of the microtubule cytoskeleton. Promotes microtubule growth and microtubule bundling. Links cytoplasmic vesicles to microtubules and thereby plays an important role in intracellular vesicle trafficking. Plays a role macropinocytosis and endosome trafficking.
Synonyms:	CYLN1, RSN, CLIP-170

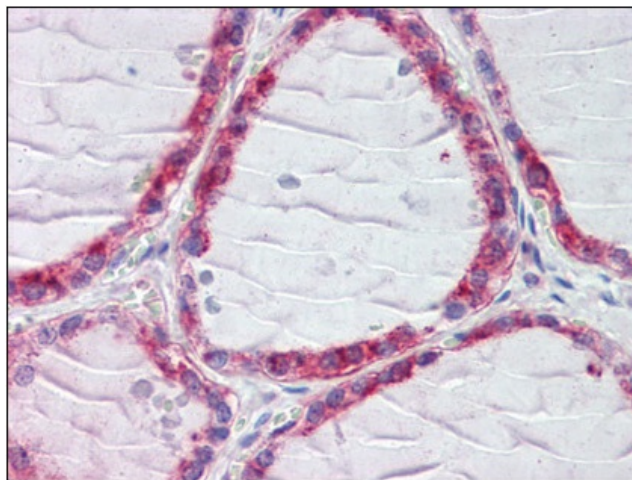


[View online »](#)

## Product images:



Human Prostate (formalin-fixed, paraffin-embedded) stained with CLIP1 antibody followed by biotinylated secondary antibody, alkaline phosphatase-streptavidin and chromogen.



Human Thyroid (formalin-fixed, paraffin-embedded) stained with CLIP1 antibody followed by biotinylated secondary antibody, alkaline phosphatase-streptavidin and chromogen.