

Product datasheet for **AP22586PU-N**

PPP4C (290-301) Goat Polyclonal Antibody

Product data:

Product Type:	Primary Antibodies
Applications:	ELISA, IHC, WB
Recommended Dilution:	ELISA. Immunohistochemistry on Paraffin Sections: 2.5 µg/ml. Western Blot: 0.1 - 0.3 µg/ml.
Reactivity:	Bovine, Canine, Human, Rat, Bat, Equine, Hamster, Monkey, Mouse, Rabbit, Xenopus, Zebrafish
Host:	Goat
Clonality:	Polyclonal
Immunogen:	synthetic peptide from the C-terminus of human PPP4C (NP_002711.1)
Specificity:	This antibody detects PPP4C at aa 290-301.
Formulation:	Tris saline buffer, pH7.3 containing 0.02% sodium azide as preservative and 0.5% bovine serum albumin as stabilizer State: Aff - Purified State: Liquid purified Ig fraction
Concentration:	lot specific
Purification:	Immunoaffinity Chromatography
Conjugation:	Unconjugated
Storage:	Store the antibody undiluted at 2-8°C for one month or (in aliquots) at -20°C for longer. Avoid repeated freezing and thawing.
Stability:	Shelf life: one year from despatch.
Gene Name:	protein phosphatase 4 catalytic subunit
Database Link:	Entrez Gene 56420 Mouse Entrez Gene 171366 Rat Entrez Gene 5531 Human P60510



[View online »](#)

Background:

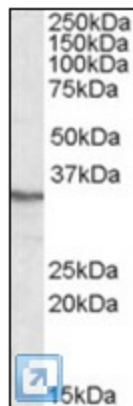
Protein phosphatase 4 (protein phosphatase X) is a 35kD serine/threonine phosphatase with predicted binding sites for iron and manganese. It is found in both the cytoplasm and the nucleus. The phosphoprotein alpha 4 has been identified as a potential regulatory subunit. PPP4C has been shown to localize to centrosomes/spindle pole bodies and is believed to be involved in microtubule organization. It may also play a role in relaying the TNF-alpha signal to the JNK pathway. Additionally, it has been shown to associate with C-Rel, NF-Kappa B p50, and RelA. Hence, it may be involved in the activation of these key mediators of immune response and apoptosis.

Synonyms:

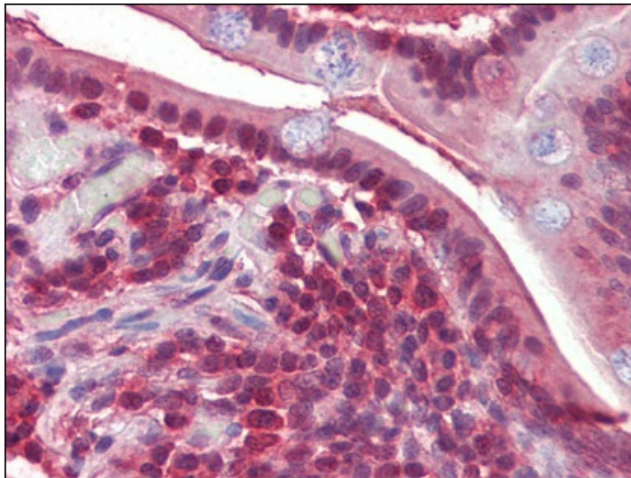
PPP4, PP4C, PPX, PP-X, Protein phosphatase X

Protein Families:

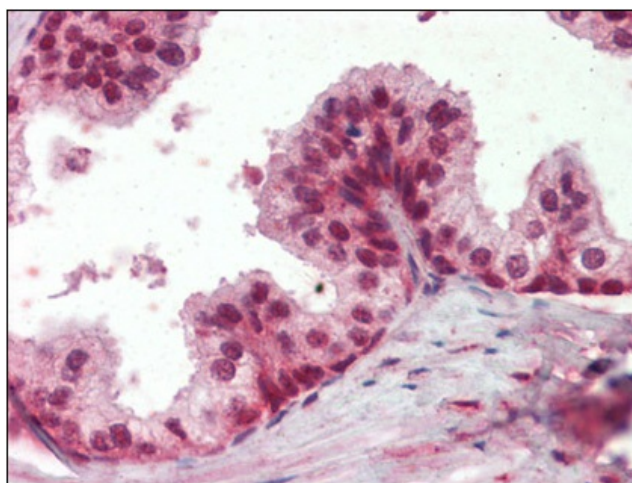
Druggable Genome, Phosphatase

Product images:

Antibody (0.3 ug/ml) staining of HEK293 lysate (35 ug protein in RIPA buffer). Primary incubation was 1 hour. Detected by chemiluminescence.



Human Small Intestine (formalin-fixed, paraffin-embedded) stained with PPP4C antibody followed by biotinylated secondary antibody, alkaline phosphatase-streptavidin and chromogen.



Human Prostate (formalin-fixed, paraffin-embedded) stained with PPP4C antibody followed by biotinylated secondary antibody, alkaline phosphatase-streptavidin and chromogen.