

## Product datasheet for **AP22581PU-N**

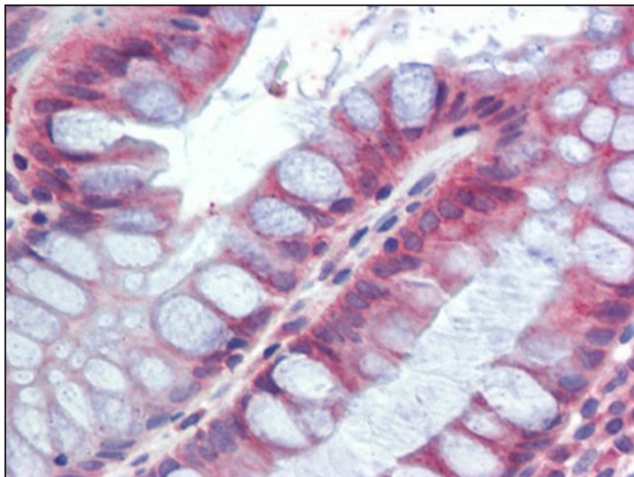
### RELM beta (RETNLB) (Internal) Goat Polyclonal Antibody

#### Product data:

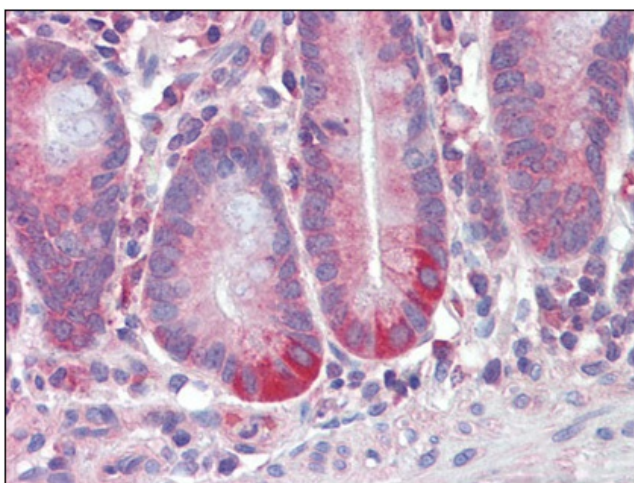
Product Type:	Primary Antibodies
Applications:	ELISA, IHC
Recommended Dilution:	<b>ELISA:</b> 1/128000. <b>Immunohistochemistry on Paraffin Sections:</b> 2.5 µg/ml.
Reactivity:	Human, Monkey
Host:	Goat
Clonality:	Polyclonal
Immunogen:	Peptide from the internal region of the protein sequence according to NP_115968.1
Specificity:	This antibody detects RELM beta (Internal).
Formulation:	Tris saline, pH 7.3 containing 0.02% sodium azide as preservative and 0.5% BSA as stabilizer State: Aff - Purified State: Liquid purified Ig fraction
Concentration:	lot specific
Purification:	Immunoaffinity Chromatography
Conjugation:	Unconjugated
Storage:	Store the antibody undiluted at 2-8°C for one month or (in aliquots) at -20°C for longer. Avoid repeated freezing and thawing.
Stability:	Shelf life: one year from despatch.
Gene Name:	resistin like beta
Database Link:	<a href="#">Entrez Gene 84666 Human Q9BQ08</a>
Synonyms:	Resistin-like beta, RELMbeta, RELM-beta RETNLB, CCRG, FIZZ2, HXCP2, RETNL2
Note:	Western Blot: Preliminary experiments gave an approx 35kD band in Human Ileum and Duodenum lysates after 0.1 µg/ml antibody staining.
Protein Families:	Secreted Protein



[View online »](#)

**Product images:**

Human Colon (formalin-fixed, paraffin-embedded) stained with RETNLB antibody followed by biotinylated anti-goat IgG secondary antibody, alkaline phosphatase-streptavidin and chromogen.



Human Small Intestine (formalin-fixed, paraffin-embedded) stained with RETNLB antibody followed by biotinylated anti-goat IgG secondary antibody, alkaline phosphatase-streptavidin and chromogen.